



Month: November 2017

Dates to Remember

Nov 1st- Tuitions Due

Nov 5th- Daylight Savings

Nov 7th- Full Day @ Nohl

Canyon **Full time families only**

Nov 8th- Villa Park Winter Camp

Registration Begins

Nov 10th- Veterans Holiday **CARES Closed**

Nov 17th- Minimum Day

Nov 20th-22nd- Full Days @ Nohl Canyon
AM & Wed only

families **Must register.**

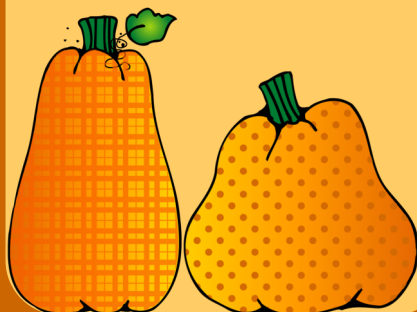
Nov 23rd & 24th- Thanksgiving Holiday
CARES Closed

Dec 1st- Tuition due

Dec 18th-Jan 5th-Winter Camp

Jan 8th- School resumes

Jan 15th- Martin Luther King **CARES Closed**



SERRANO C.A.R.E.S.

Centers for Afterschool, Recreation., Enrichment & Safety

LJOHNSON@ORANGEUSD.ORG

17741 SERRANO AVE. VILLA PARK

714) 628-5393

Hello Parents & Guardians,

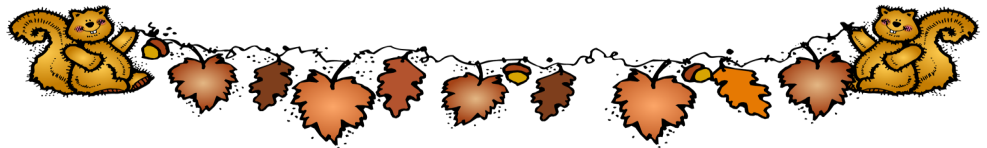
Thank you all for adding us on class dojo. If you have not had a chance to add us please do so. We can print up another add form if you do not have one.

We are welcoming fall and a new staff member. Miss. Maritza is our new addition to our Dream Team here at Serrano. She is currently a student at SCC and we are very lucky to have her.

As always thank you for your support. We have a lot of fun activities planned in November. We will celebrate the holiday and we will continue to explore the state of Texas.

Have a wonderful month.

We are very thankful for you.



Wednesday Expanded Learning Activities

Nov 1st- Balancing Robots

Nov 8th- Apple science

Nov 15th- Sliding Robot

Nov 29th- Growing Foam



Happy Harvest



Villa Park Winter Camp Registration Information

Registration for Winter Camp will be Nov 8th-16th provided space is available.

We encourage you to sign up on the first morning of registration @ 7am.

Winter Camp Dates:

Week 1- Dec 18th, 19th , 20th & 21st

Week 2- **CLOSED / No CARES provided**

Week 3- Jan 2nd, 3rd, 4th & 5th

The forms are available online on the Orange Unified school District Website @ www.orangeusd.org. Villa Park will be your camp location. Click on district departments, scroll down and click on child care, scroll down and open the Winter Camp Registration section. Enrollment at each site is limited and based on date and time of registration. When maximum capacity is met at each location, your registration form will be returned. Your second choice may be provided if space is available.

We anticipate Villa Park filling up quickly.

Staff can not accept any registration forms until Wednesday, November 8th at 7:00am.



Winter Camp Payment Methods

All Parents, including EFT (automatic withdrawal from your account) will be required to pay for the first week of attendance by check or money order at the time of registration.

The CDS office will do an EFT transaction for the 3rd week of camp and January's prorated tuition on **Wednesday, January 10th**.



Nutrition & Health Fact: Turkey is low in fat and high in protein. It is an inexpensive source of iron, zinc, phosphorus, potassium and B vitamins. A serving of turkey is a 2 to 3 ounce cooked portion. The Food Guide Pyramid suggests 2 to 3 servings from the meat group each day.

Serrano CARES Staff

Lead: Mrs. Lynn

Assistant: Ms. Ashley

Aide: Ms. Nancy

HAPPY
THANKSGIVING 