

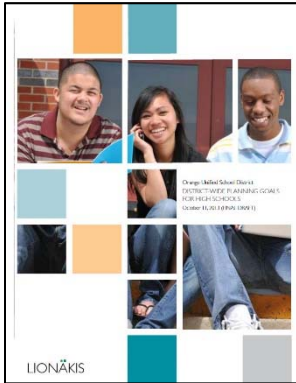
# Canyon High School

Facilities Master Plan, Measure K Implementation

October 2, 2014

gkkworks

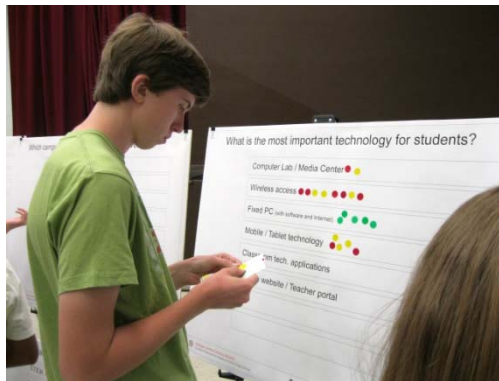
# RECAP - CANYON HIGH SCHOOL MASTER PLAN



1,800 STUDENTS IN 1972  
PLANNING FOR 2,500

66 CURRENT TEACHING  
STATIONS  
PLANNING FOR 92

*New District  
Education  
Specification*



General Learning Environment

53 Teaching stations

Science

12 - wet labs, chemistry and general science

Music, Arts, Drama and Dance

600 seat theater, Black box, Video Production

Physical Education and Athletics

Football Stadium, new pool and baseball fields,

Home Economics/CTE/Industrial Arts

Specific Programs at Canyon

Special Education

Life Skills, MSMF Classroom

Parking and Circulation

Students 600+ spaces

*Community  
Involvement  
and Input*



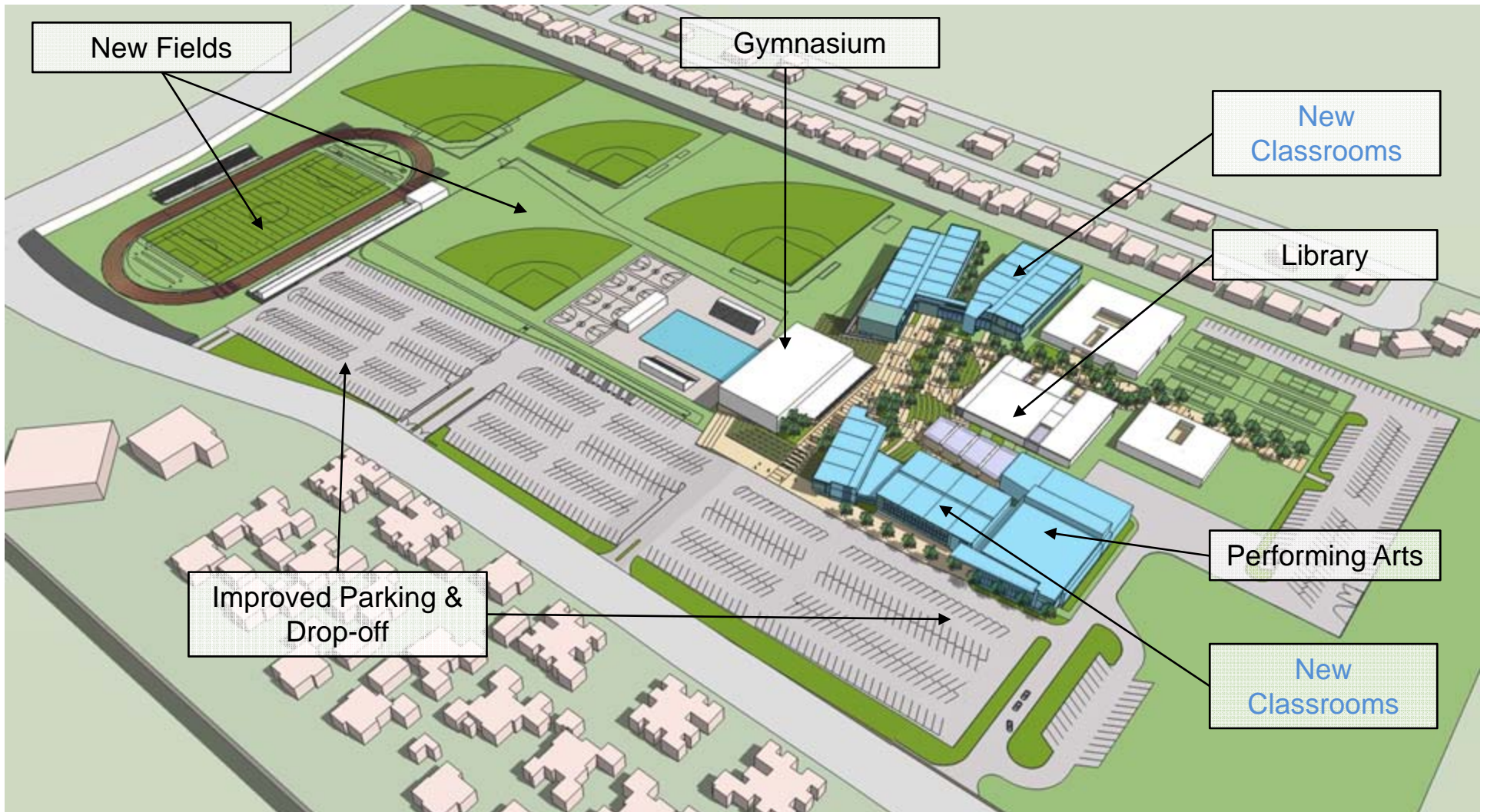
## CAMPUS AND COMMUNITY GOALS AND PRIORTIES

- Replace Portables
- Create New or Renovated 21<sup>st</sup> Century Learning Environments
- Improve Safety and Security (campus access & supervision)
- Preserve Quality of Quads
- Increase Parking Quantity
- Improve Drop-off and Site Circulation
- Improve Curb Appeal
- Improve Athletic Fields & Facilities



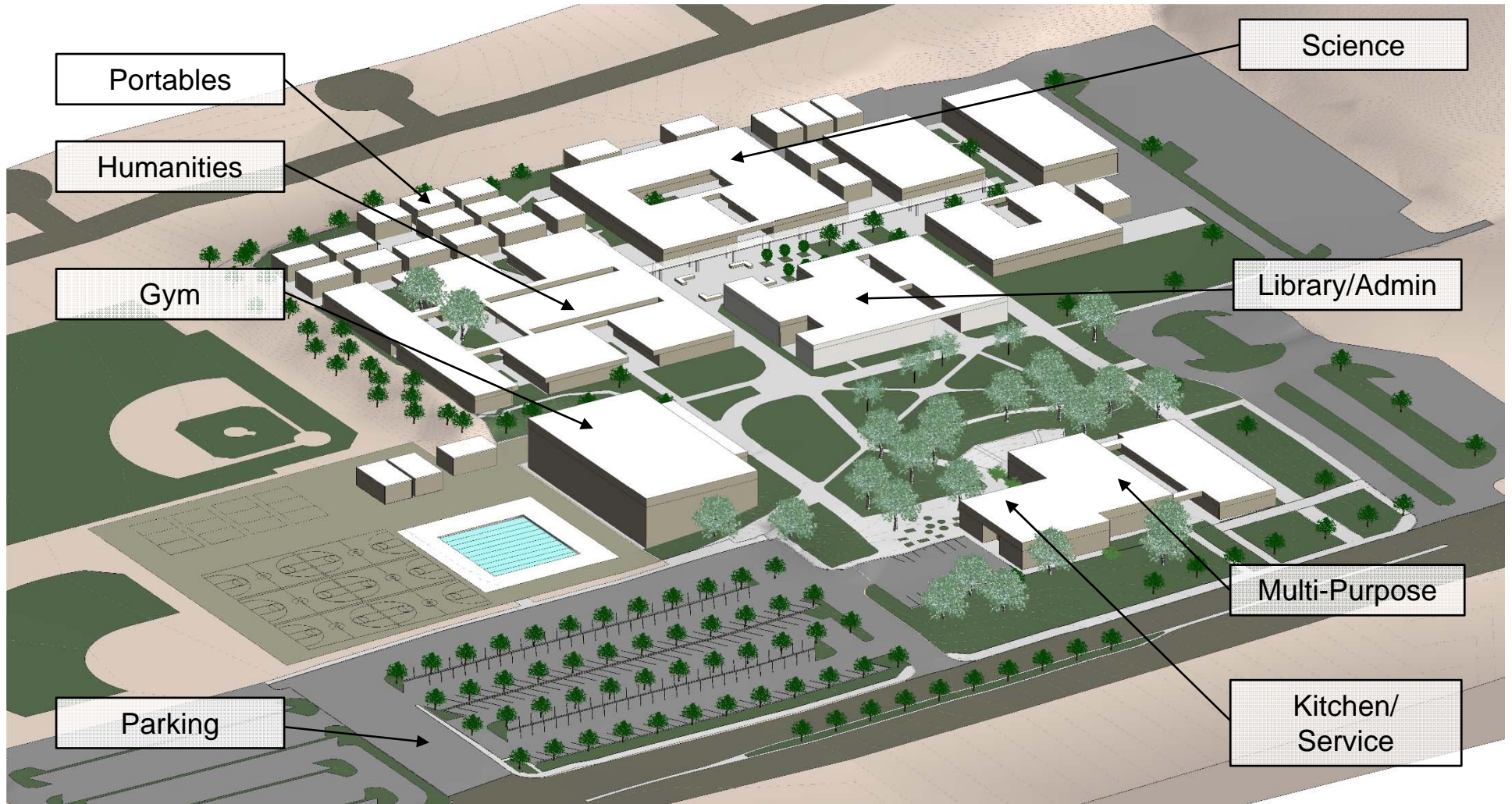
# Proposed Facility Master Plan

Perspective View



# Canyon High School Master Plan Measure K Implementation

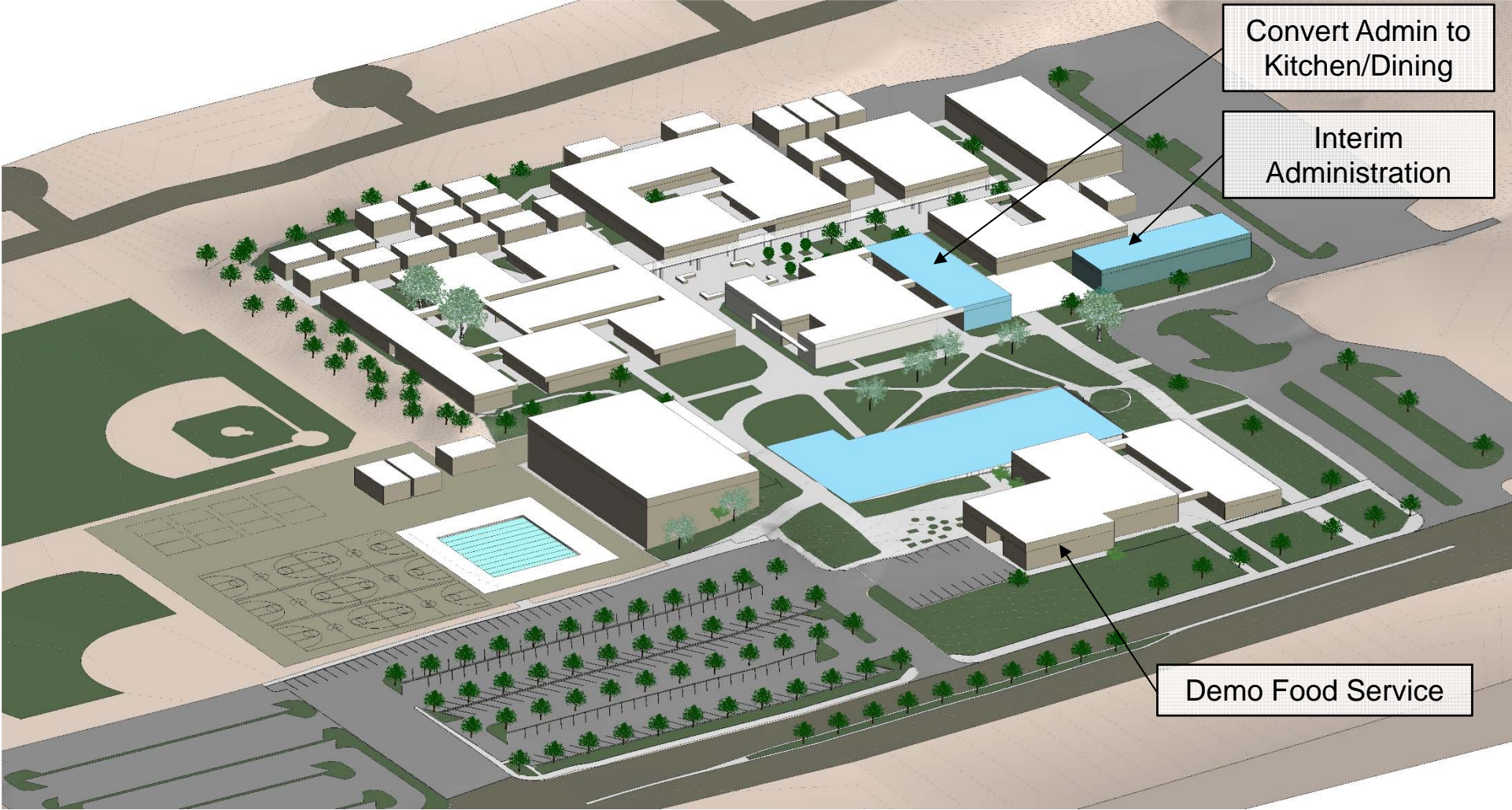
## Existing Campus - Academic Core



# Canyon High School Master Plan Measure K Implementation



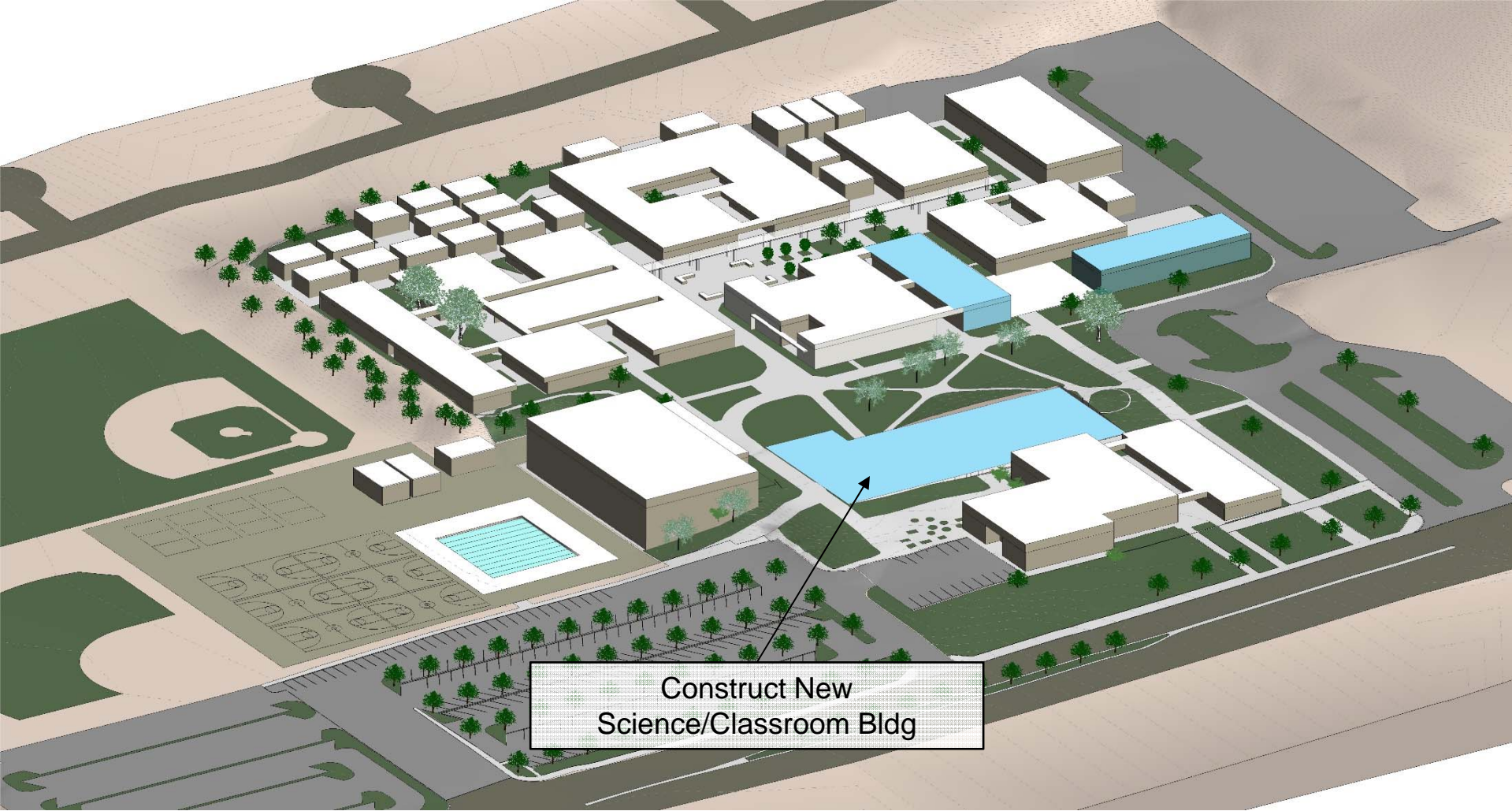
## Construction Sequence



# Canyon High School Master Plan Measure K Implementation

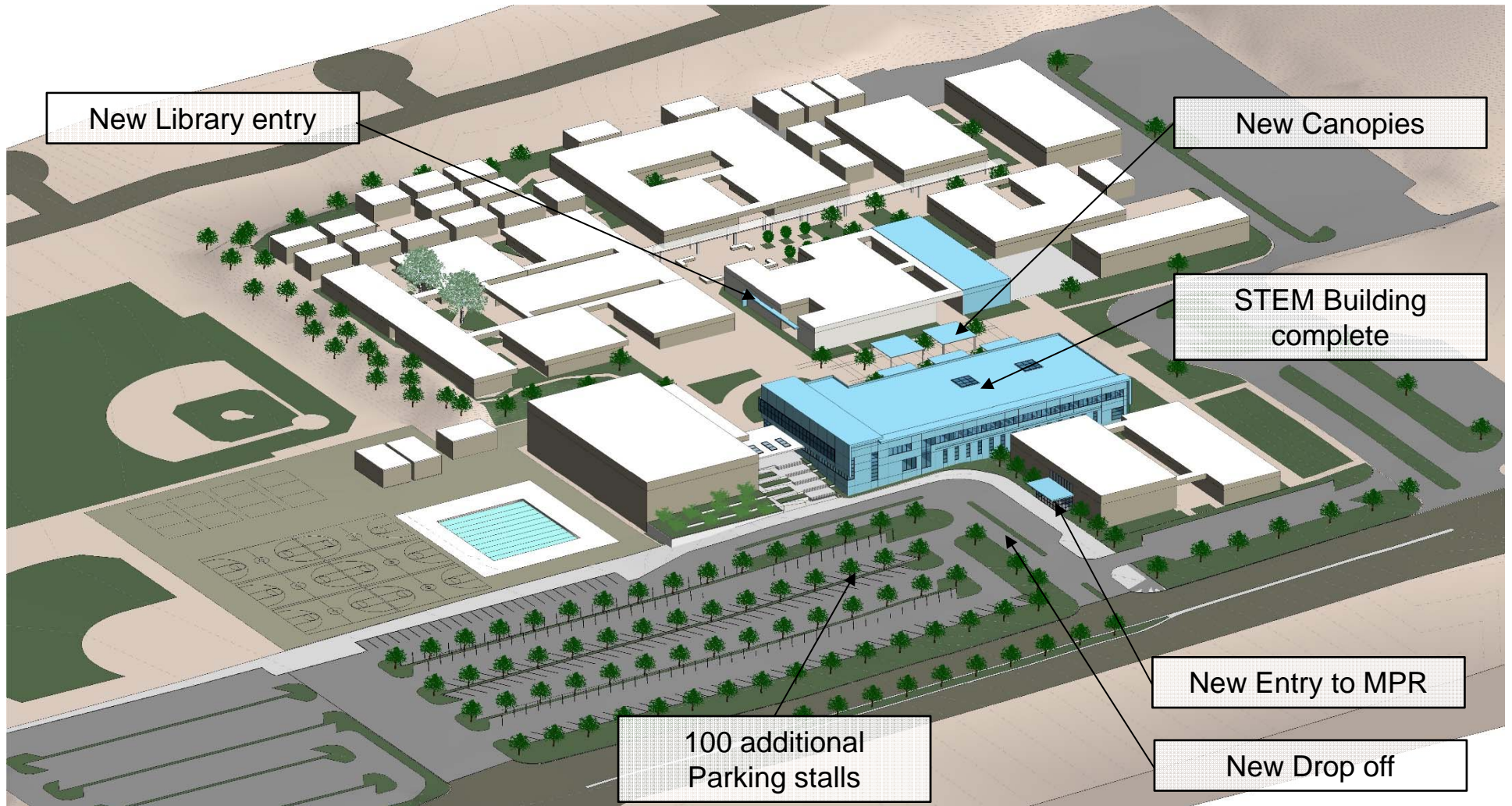


## Construction Sequence



# Canyon High School Master Plan Measure K Implementation

## Construction Sequence





# Canyon High School Master Plan Measure K Implementation



## Massing Study



# Canyon High School Master Plan Measure K Implementation

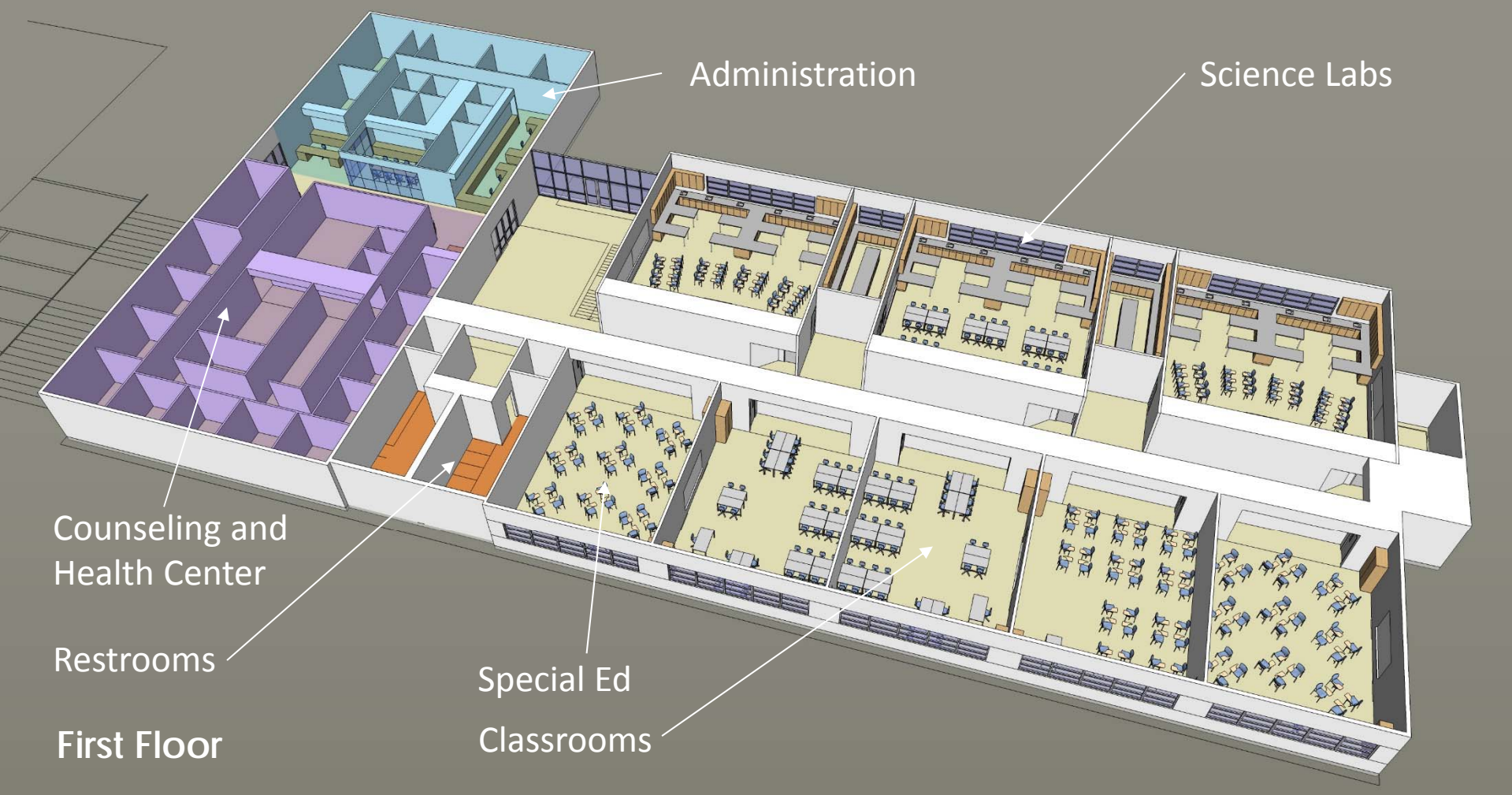


## Massing Study



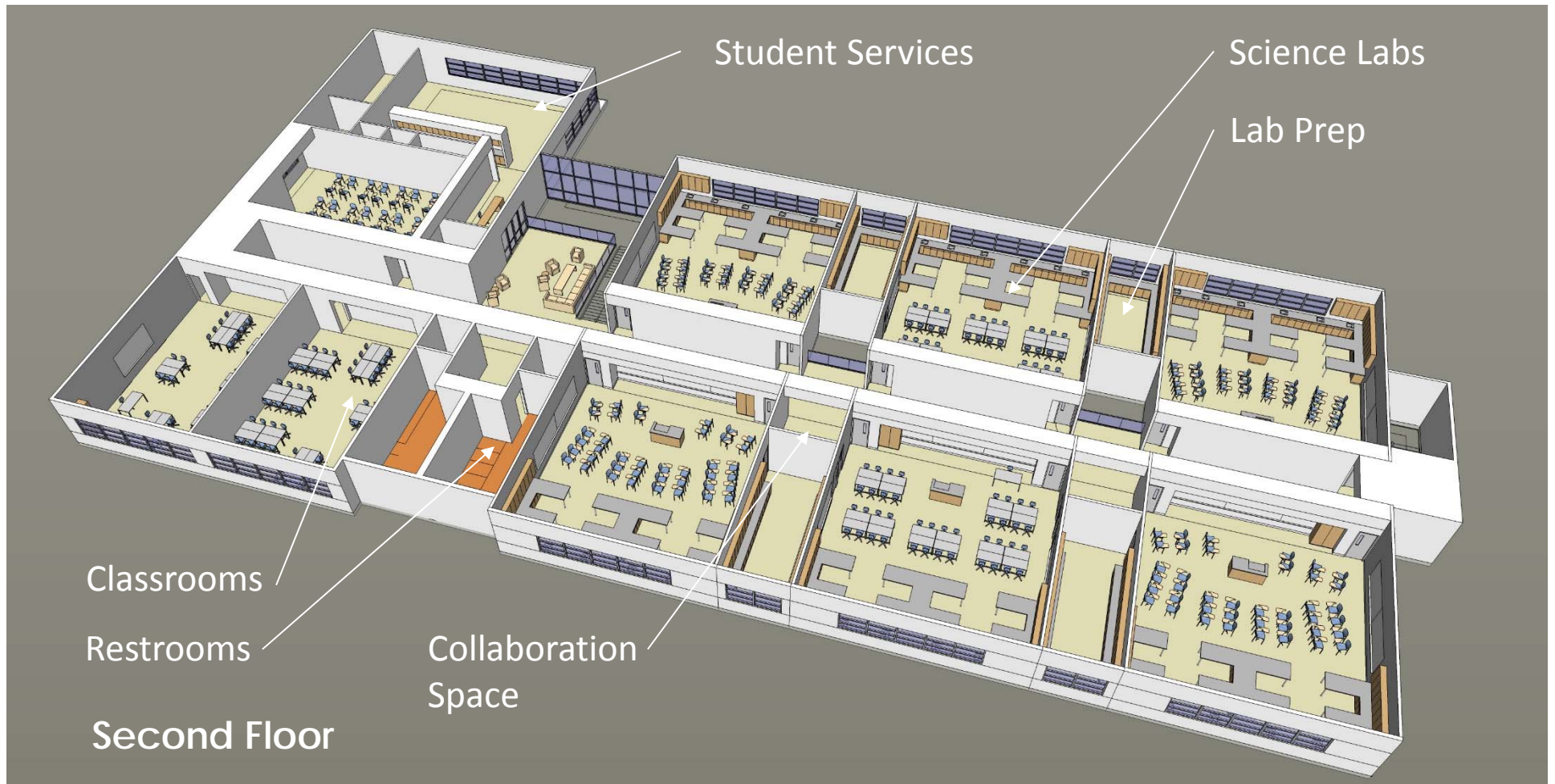
# Canyon High School Master Plan Measure K Implementation

## STEM Building



# Canyon High School Master Plan Measure K Implementation

## STEM Building



# Canyon High School Master Plan Measure K Implementation

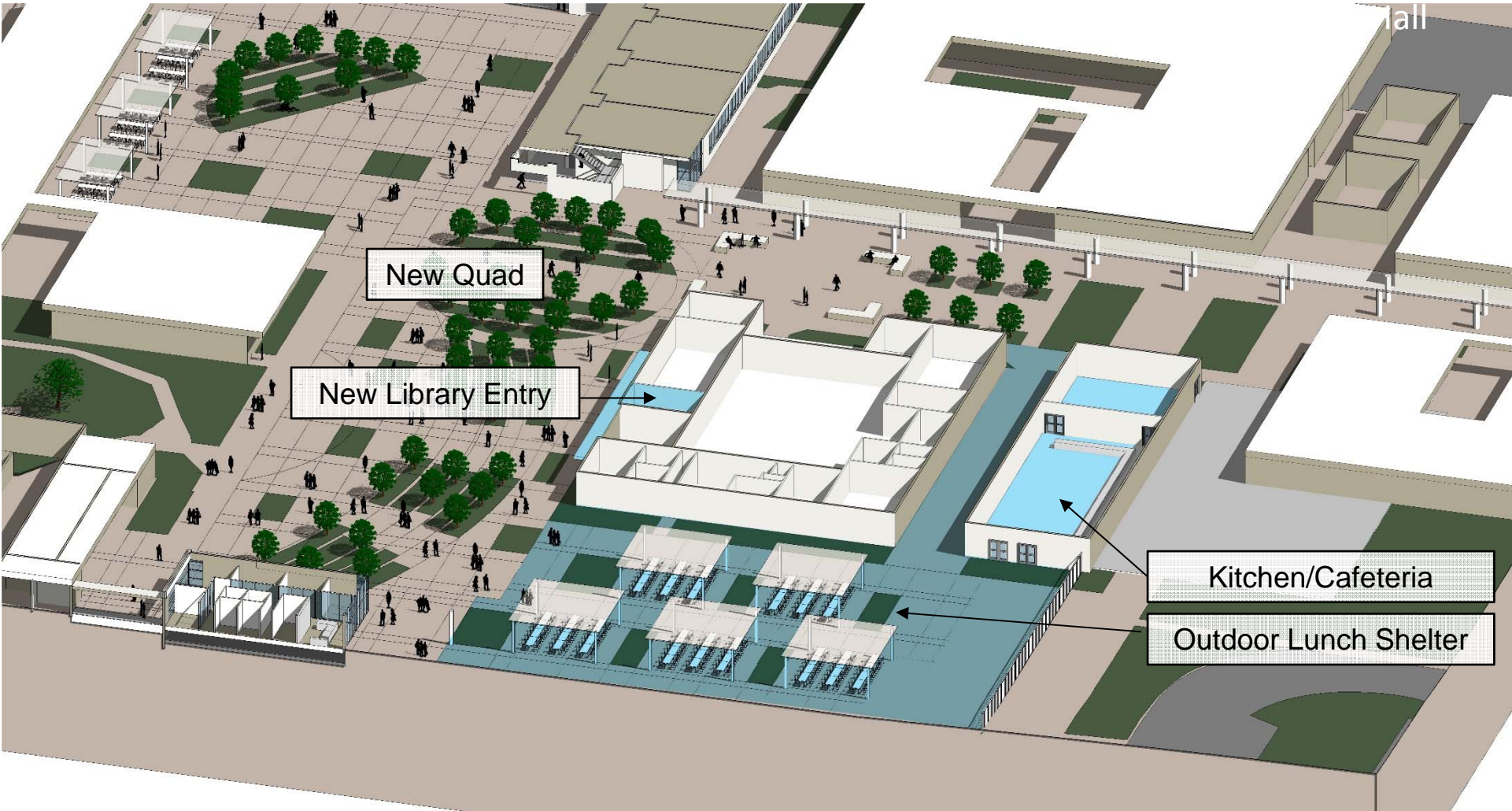
## STEM Building



Possible Configurations Of A Typical Lab

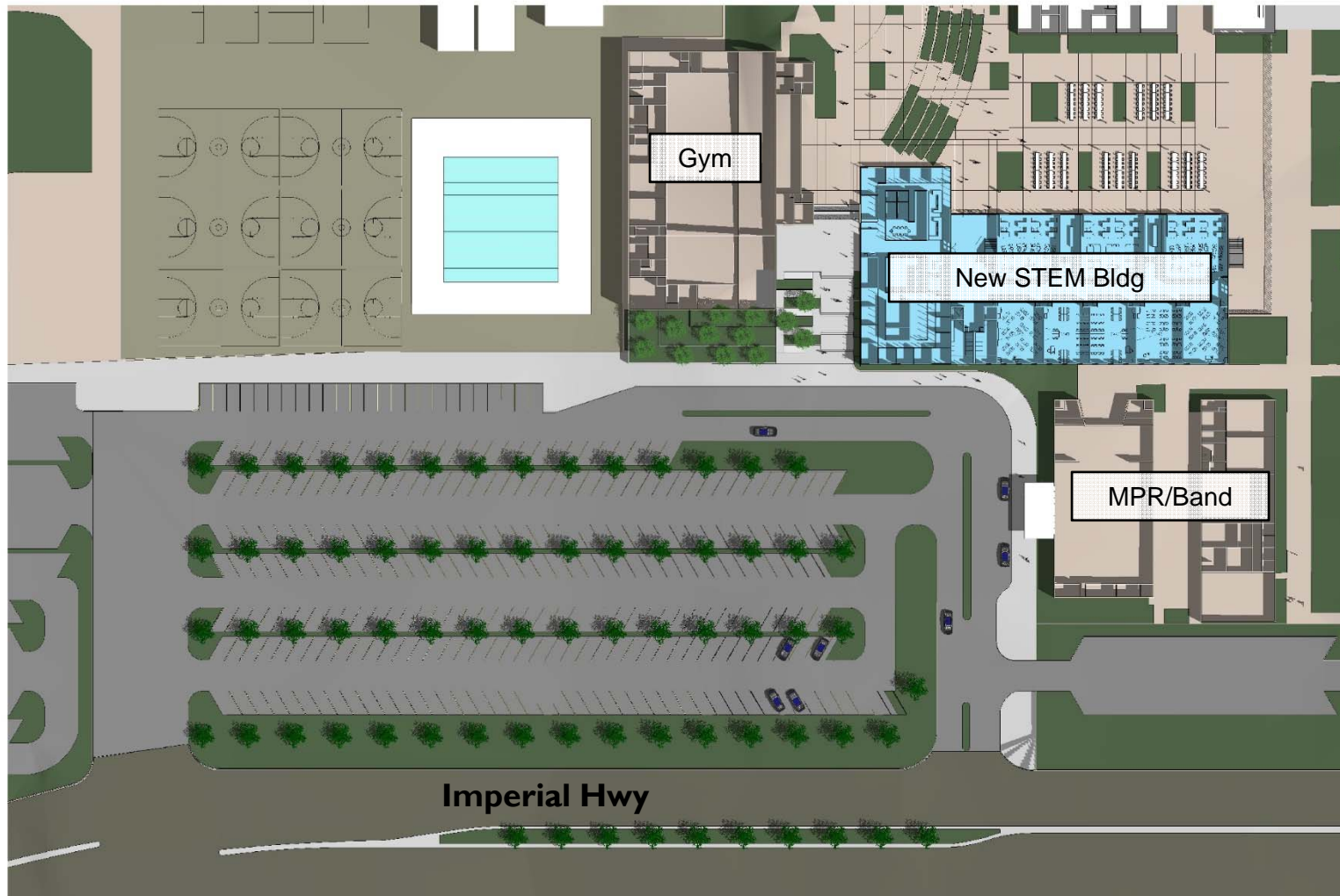
# Canyon High School Master Plan Measure K Implementation

## Kitchen/Dining – Quad



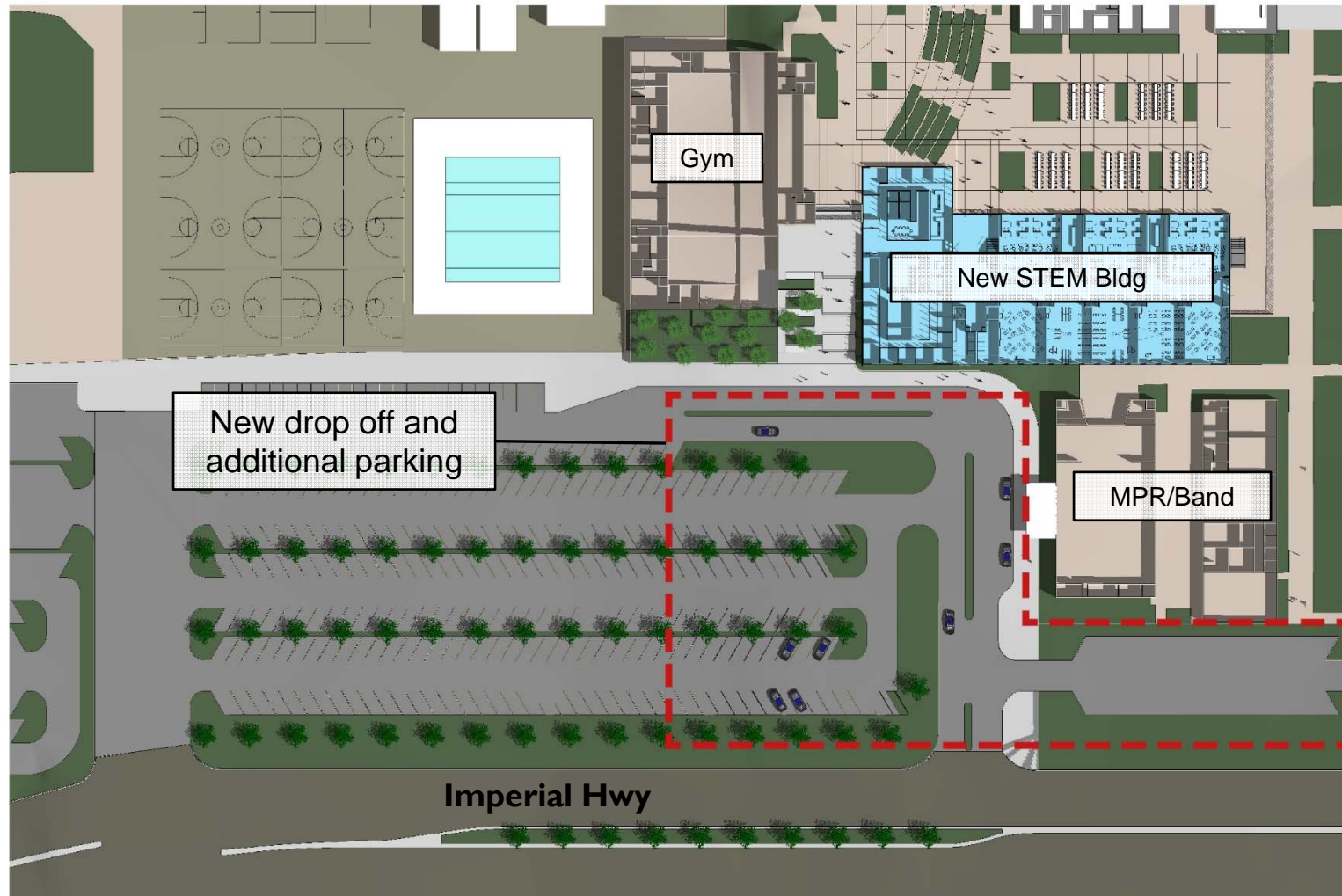
# Canyon High School Master Plan Measure K Implementation

## Parking and Drop-off improvements



# Canyon High School Master Plan Measure K Implementation

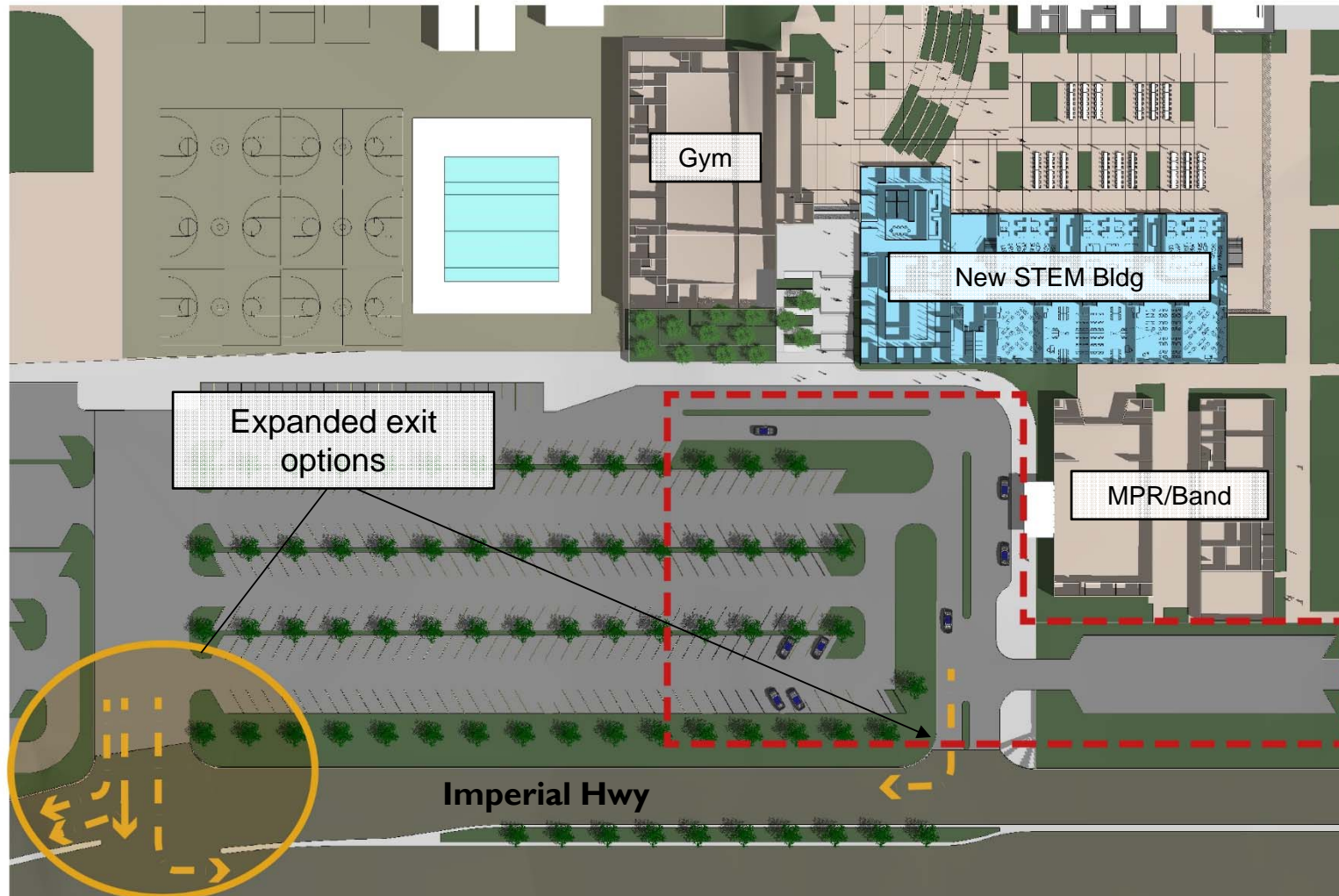
## Parking and Drop-off improvements





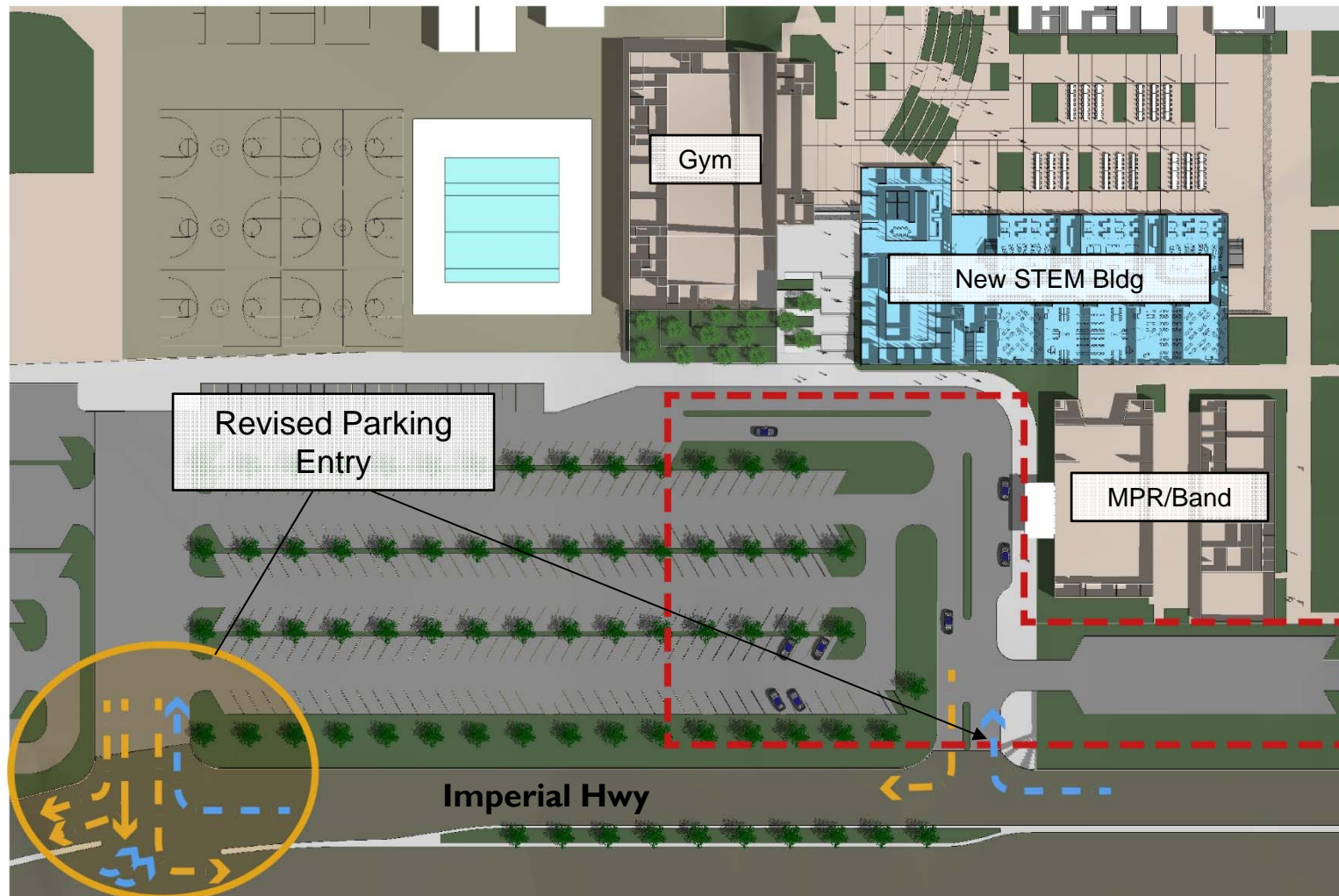
# Canyon High School Master Plan Measure K Implementation

## Parking and Drop-off improvements



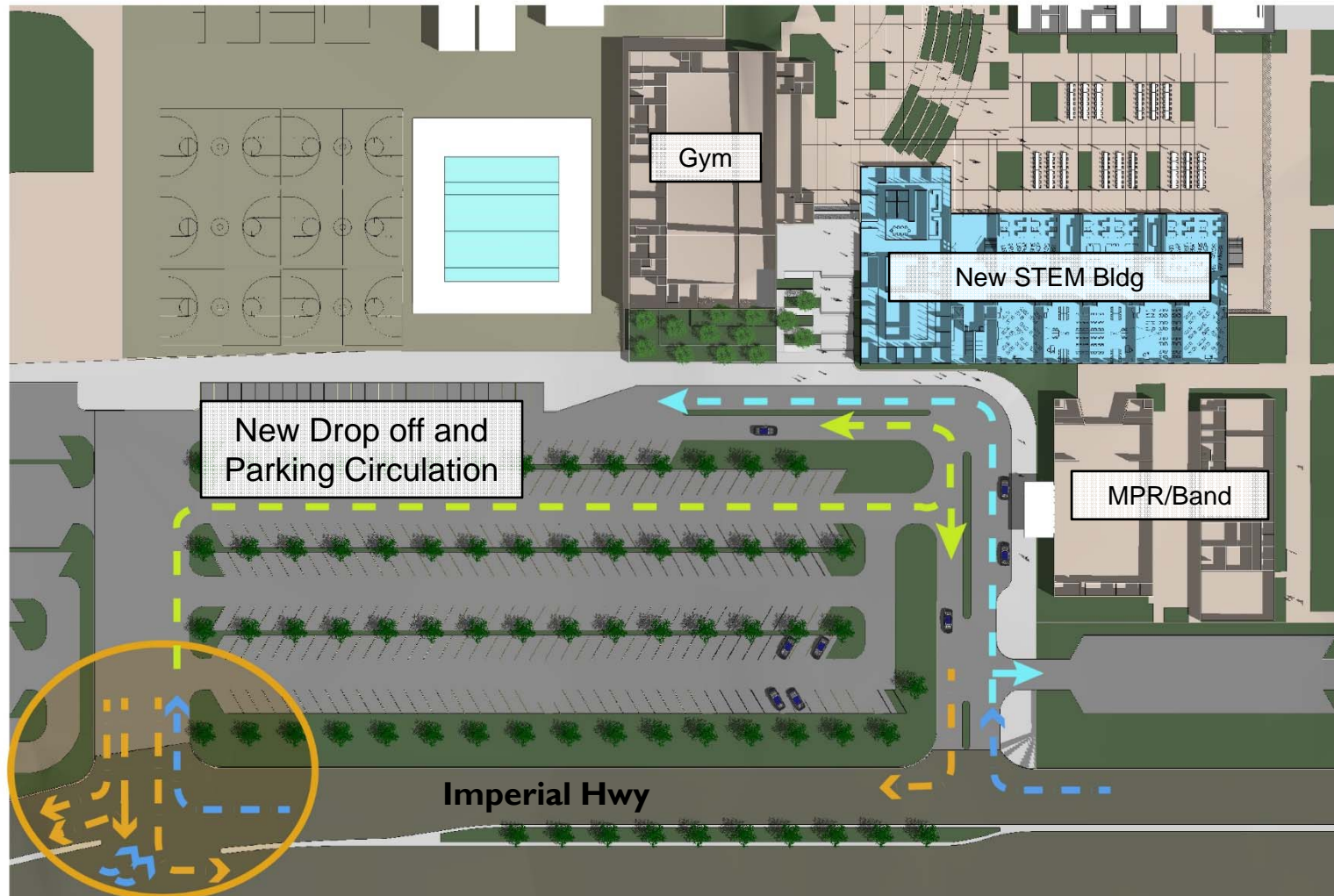
# Canyon High School Master Plan Measure K Implementation

## Parking and Drop-off improvements



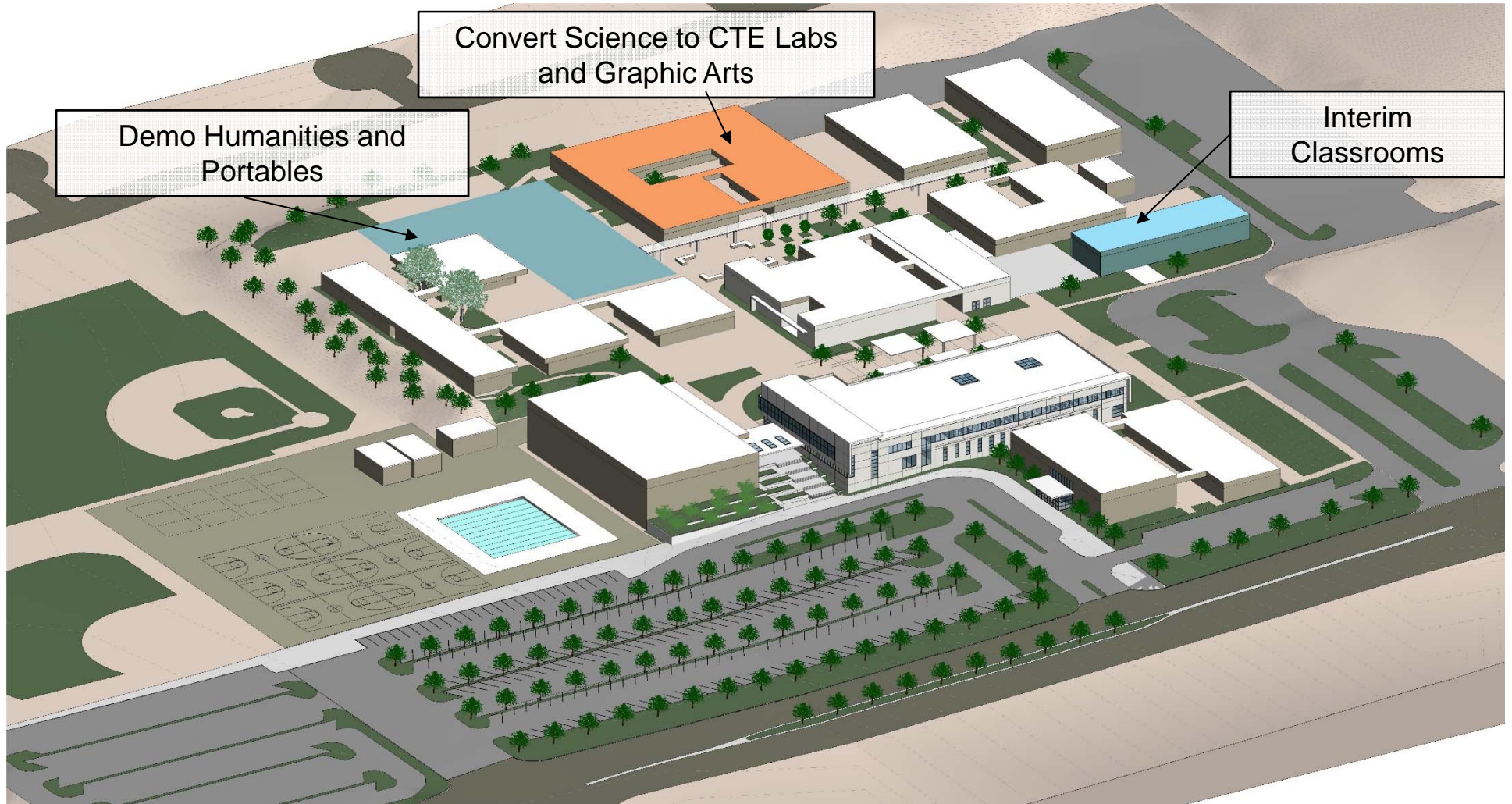
# Canyon High School Master Plan Measure K Implementation

## Parking and Drop-off improvements



# Canyon High School Master Plan Measure K Implementation

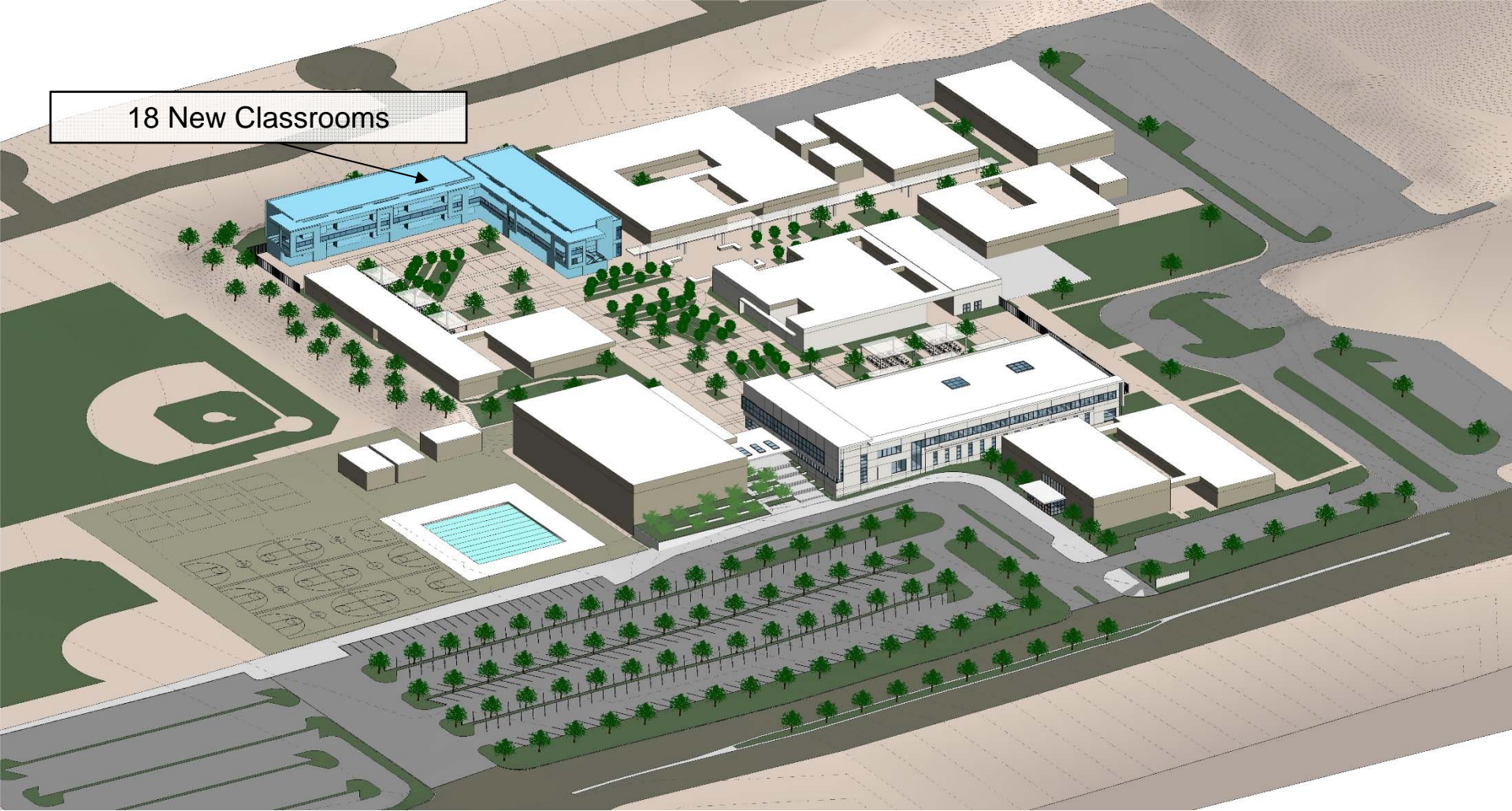
## Construction Sequence



# Canyon High School Master Plan Measure K Implementation



## Construction Sequence



# Canyon High School Master Plan Measure K Implementation

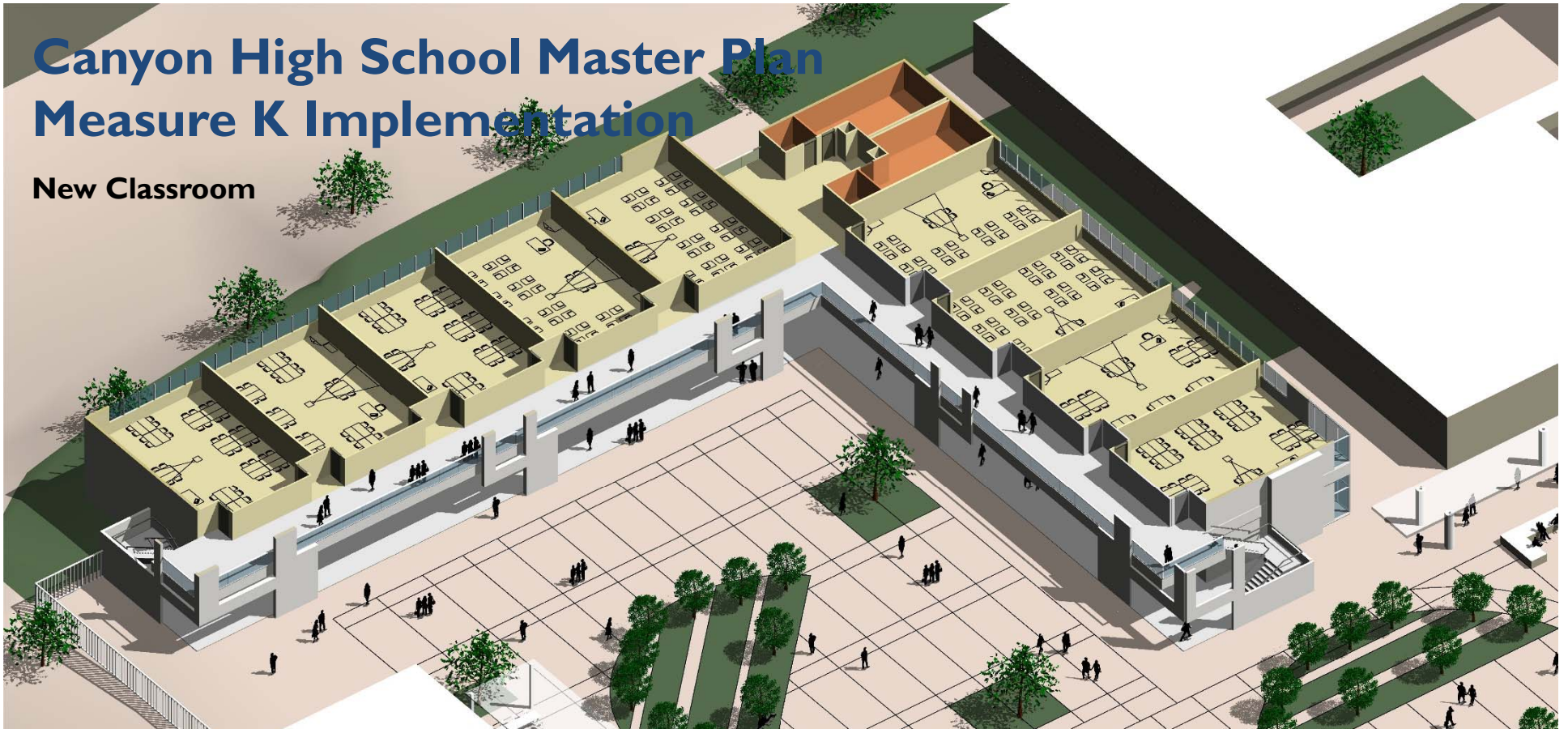


## Massing Study

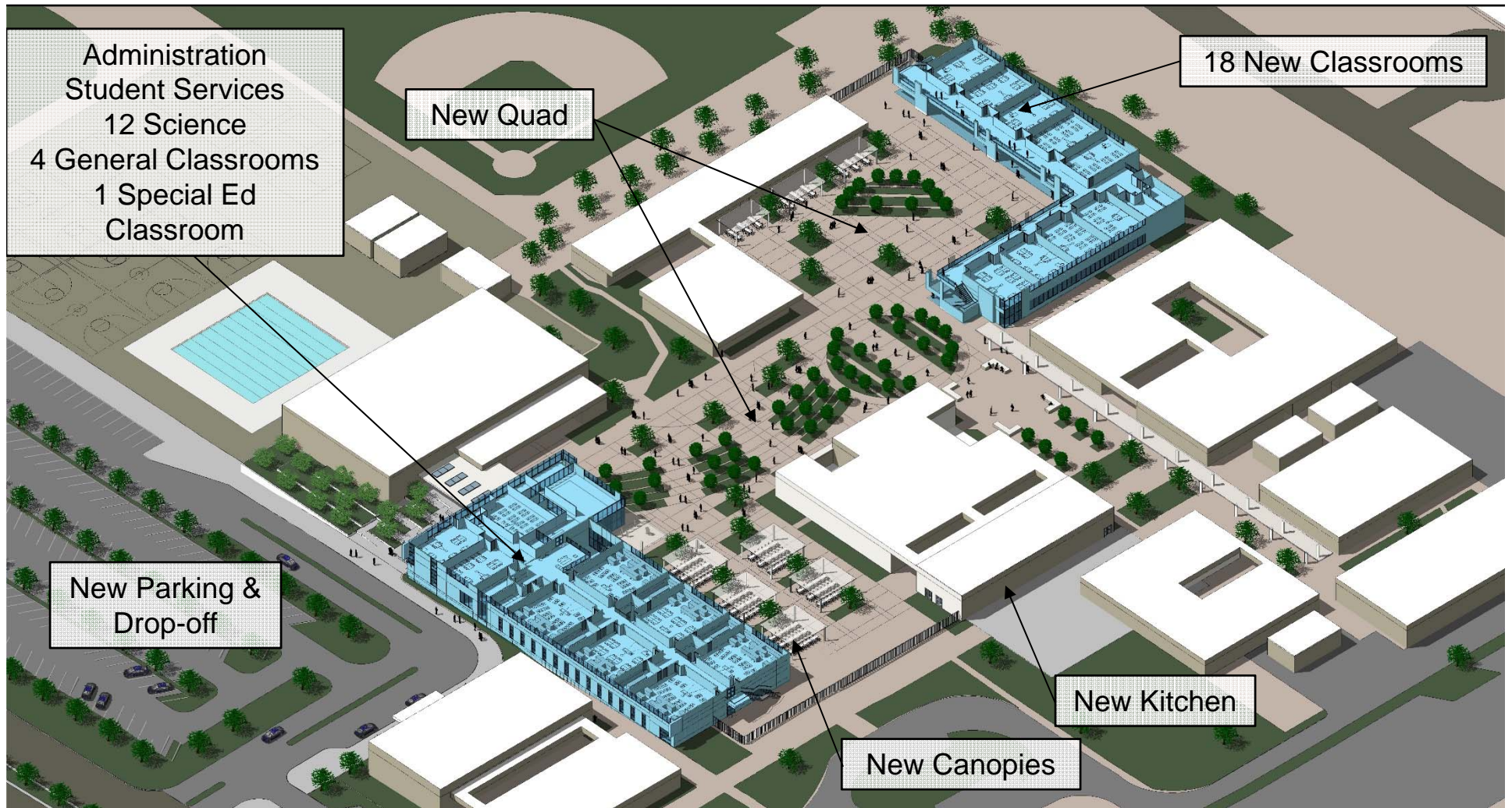


# Canyon High School Master Plan Measure K Implementation

New Classroom



# Canyon High School Master Plan Measure K Implementation





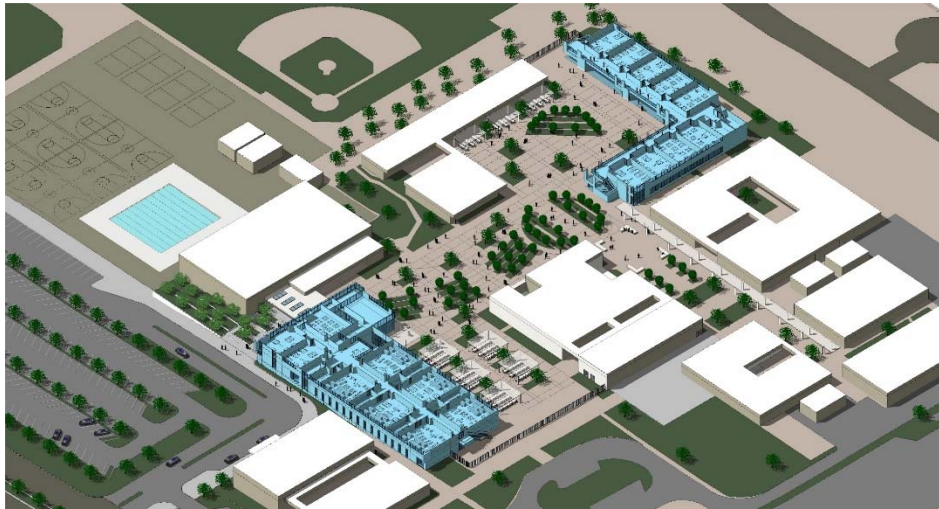
# Canyon High School Master Plan Measure K Implementation



## Massing Study



# Canyon High School Master Plan Phase One Classroom Inventory



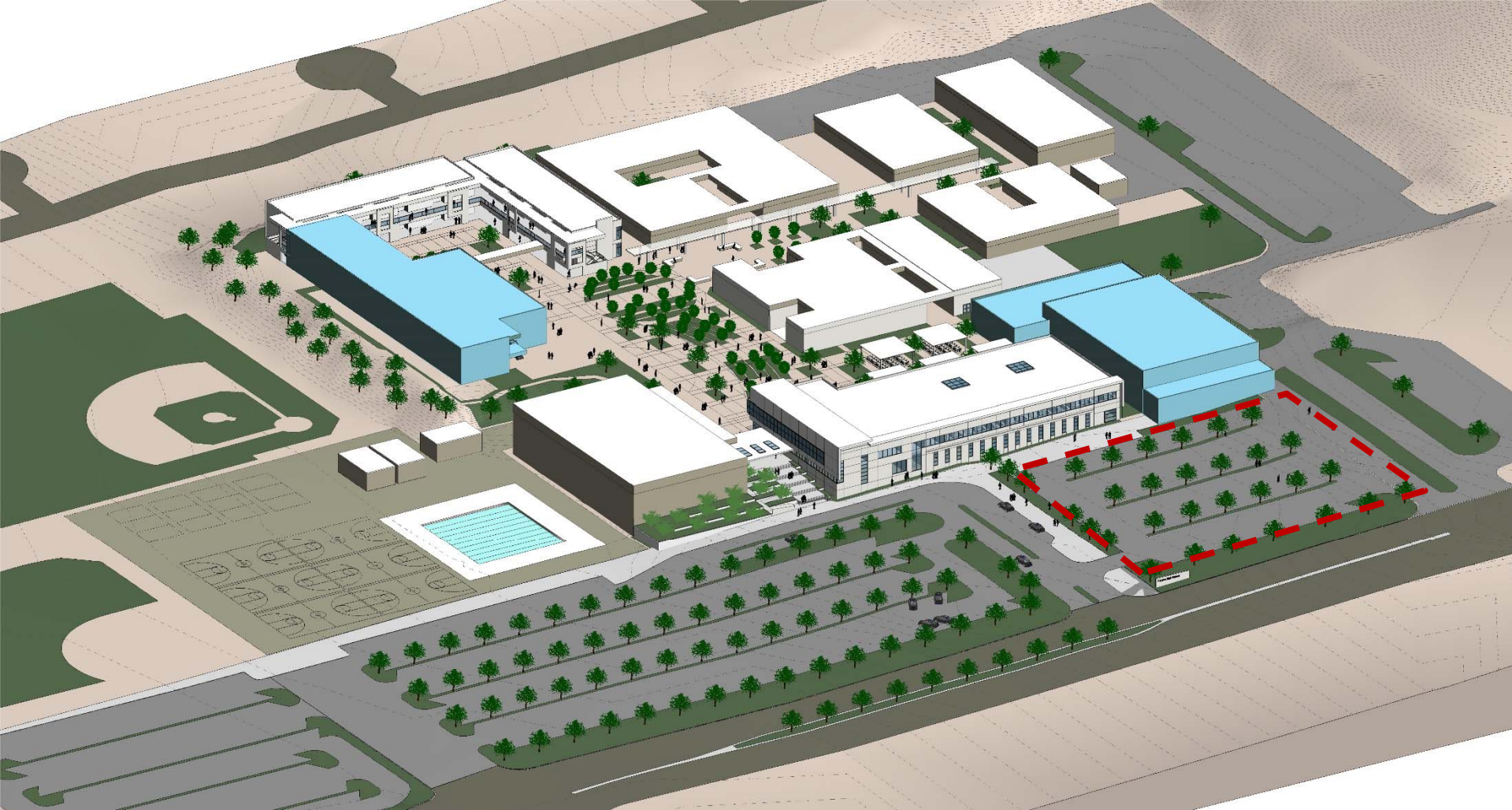
Humanities Building	
Modular Classrooms	
New Science Building	
New Classroom Building	
<b>Total</b>	
Collaboration Spaces	
Restrooms	

## Learning Environment - # of stations

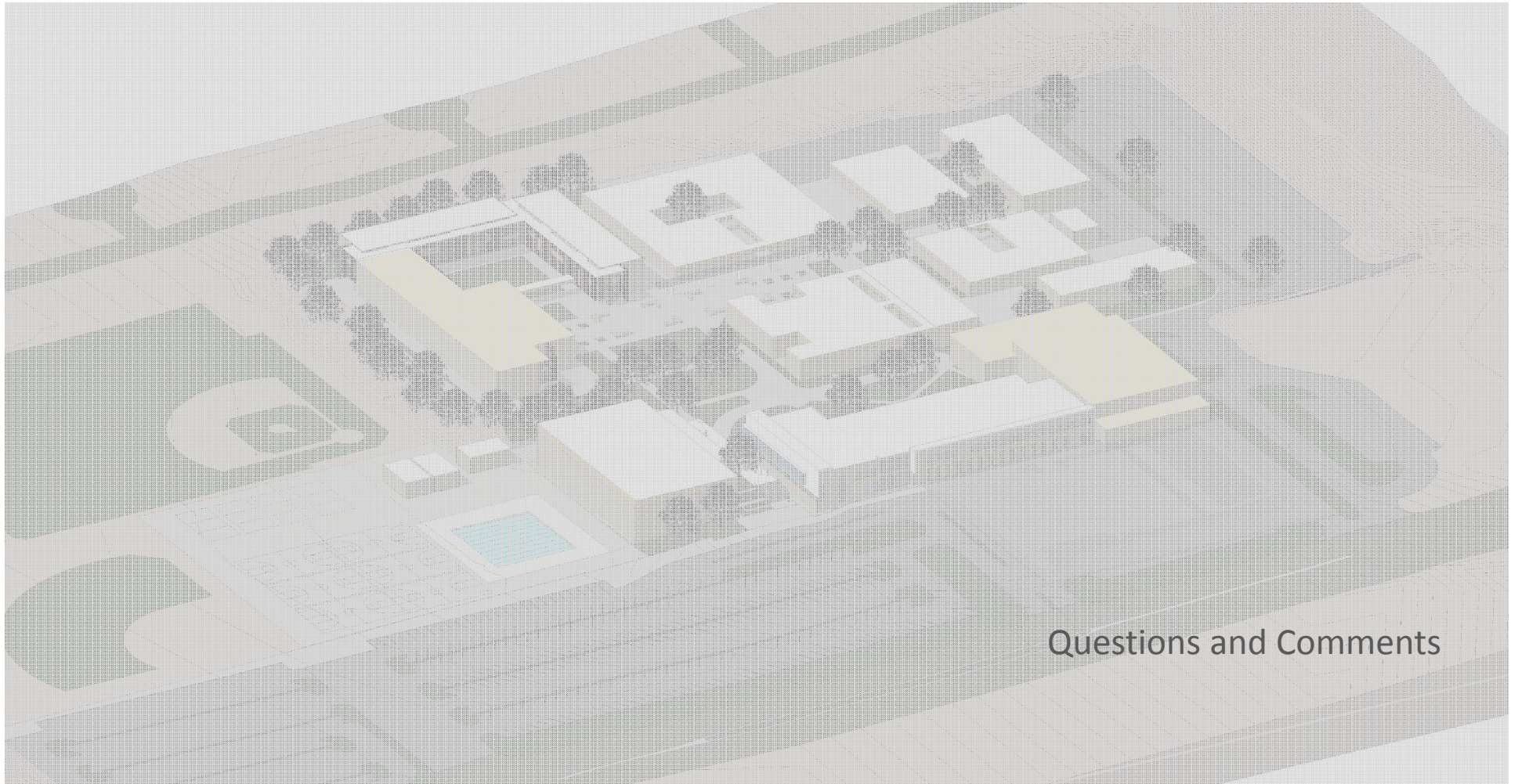
Existing	Phs 1
23	10
19	3
	17
	18
<b>42</b>	<b>48</b>
0	4
0	8

# Canyon High School Master Plan Measure K Implementation

Future Vision



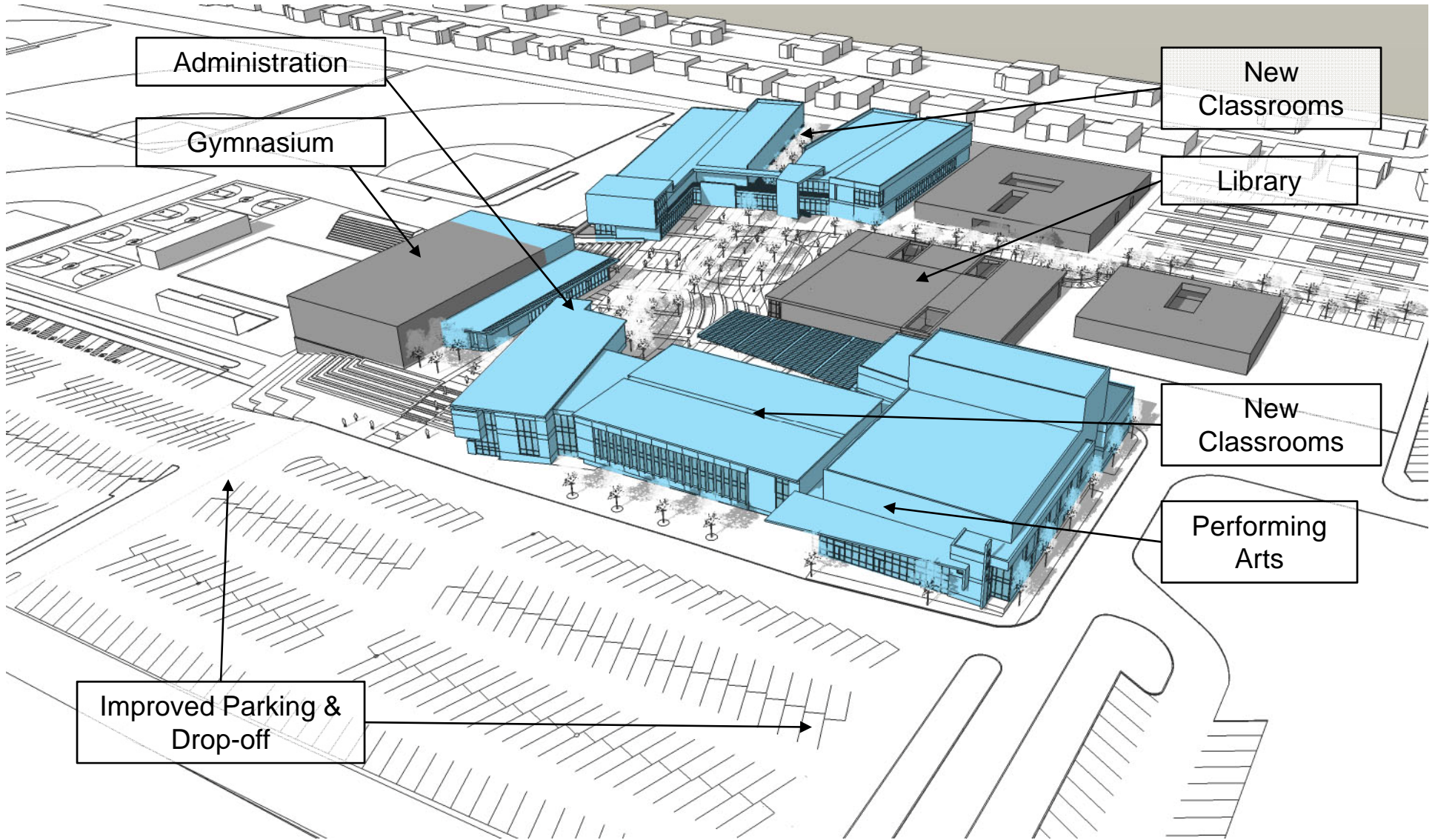




Questions and Comments

# Proposed Facility Master Plan

New Construction & Renovated Facilities



# Canyon High School Master Plan

## Measure K Implementation

### Massing Study

