



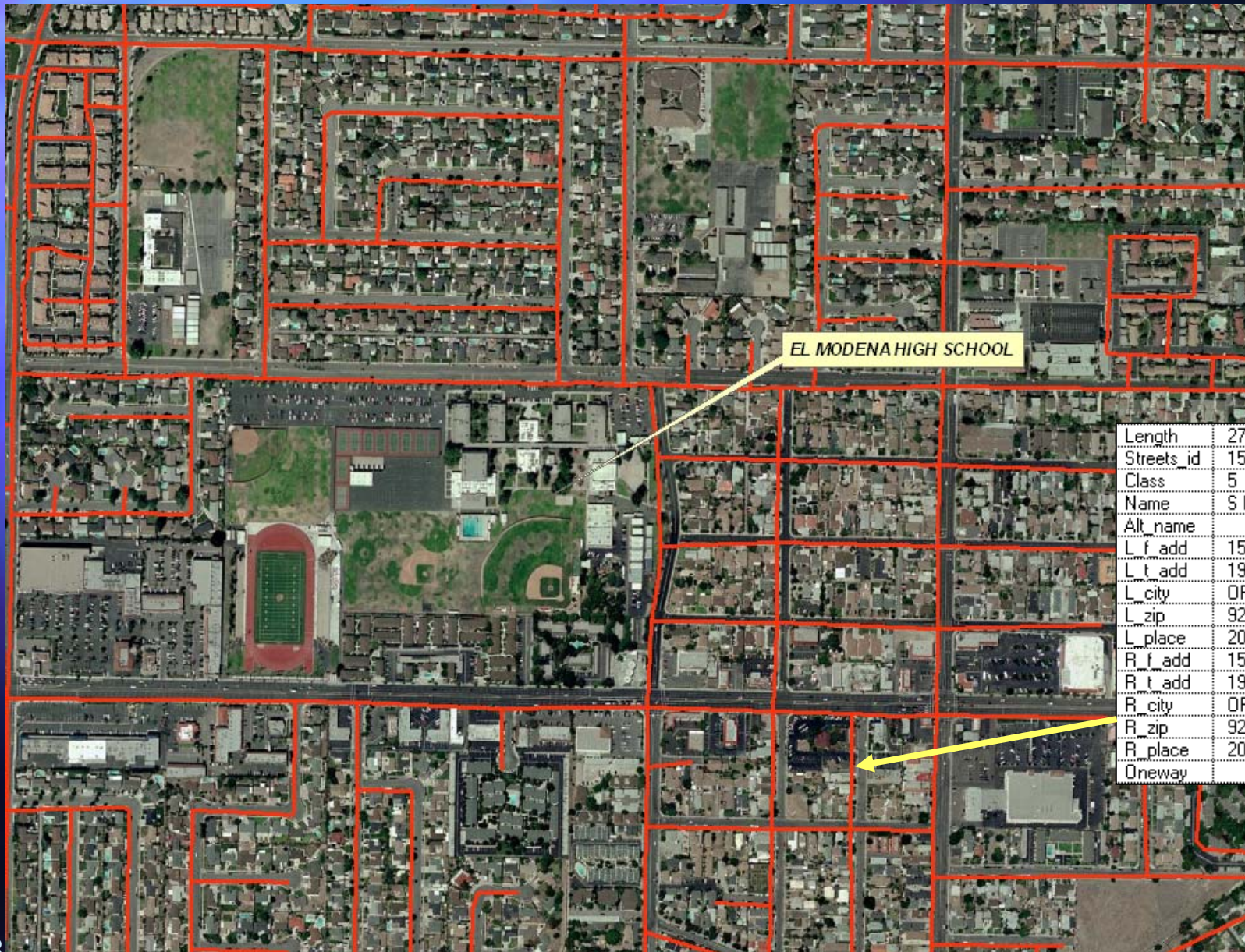
# Work Accomplished by DDP for Orange USD

- Updated mapping layers for the District
- Researched area development projects/plans
- Analyzed relevant area demographic data
- Developed 7-year student projections
- Provided a Demographic Projection Report with findings and analysis

# Main Points

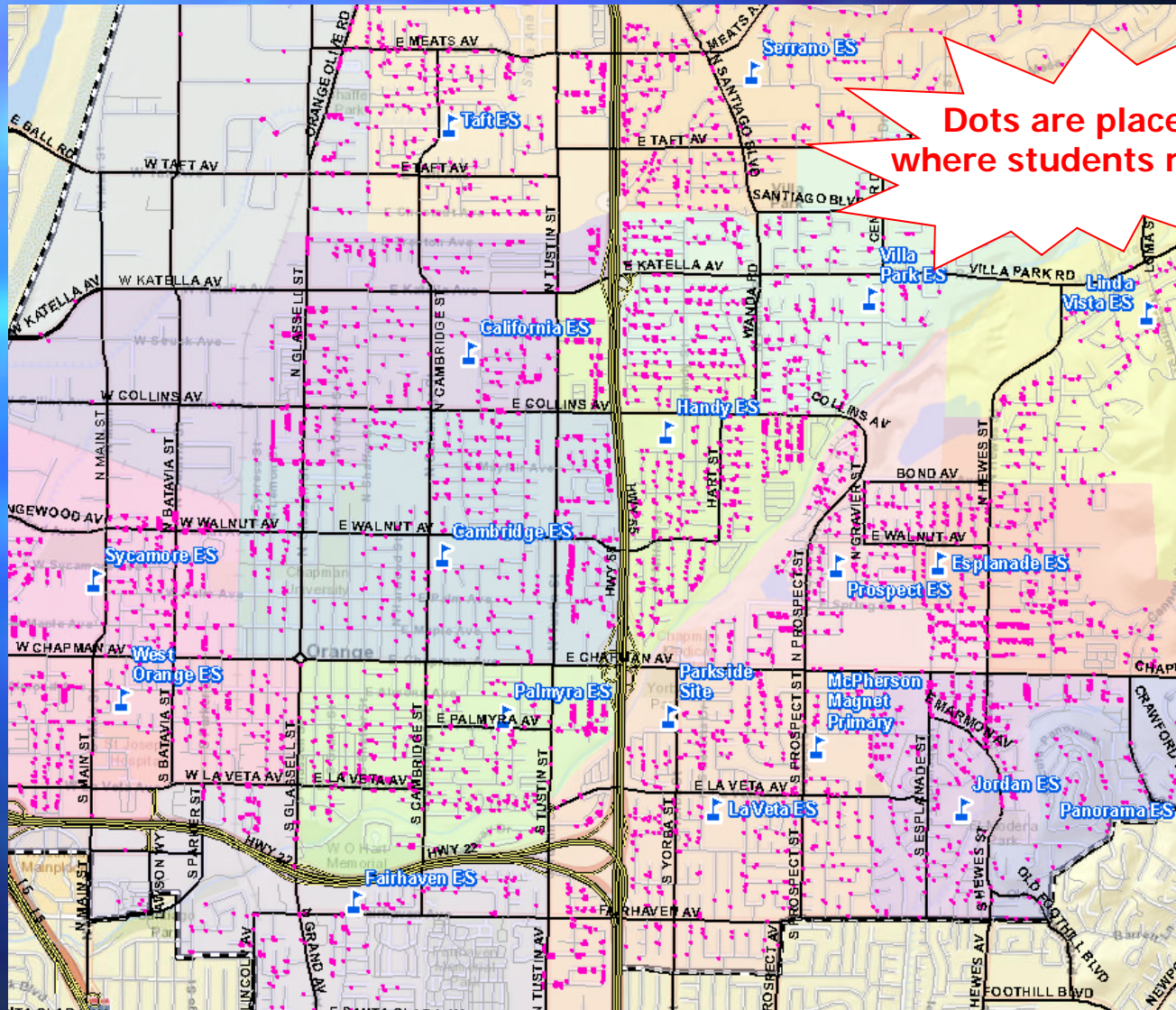
- DDP develops projections based on “residence”.
- Attendance Matrices show the current “Open Enrollment” patterns (inter- and intra-district transfers).  
[Pages 24-26 in the Report]
- Seven existing elementary attendance areas have student populations at or below 450 and five of them are below 400.  
(excludes “Open Enrollment”, Special Education and Out-of-District students)
- Five existing elementary schools have enrollment at or below 450 and two of them are below 400.  
(includes “Open Enrollment”, Special Education and Out-of-District students)
- Orange HS has very high “transfer out” rates and by far the largest resident population for its attendance area

# Mapping- updated since 1996



Length	273.466800
Streets_id	15703
Class	5
Name	S PARK ST
Alt_name	
L_f_add	151
L_t_add	199
L_city	ORANGE
L_zip	92869
L_place	2015
R_f_add	150
R_t_add	198
R_city	ORANGE
R_zip	92869
R_place	2015
Oneway	

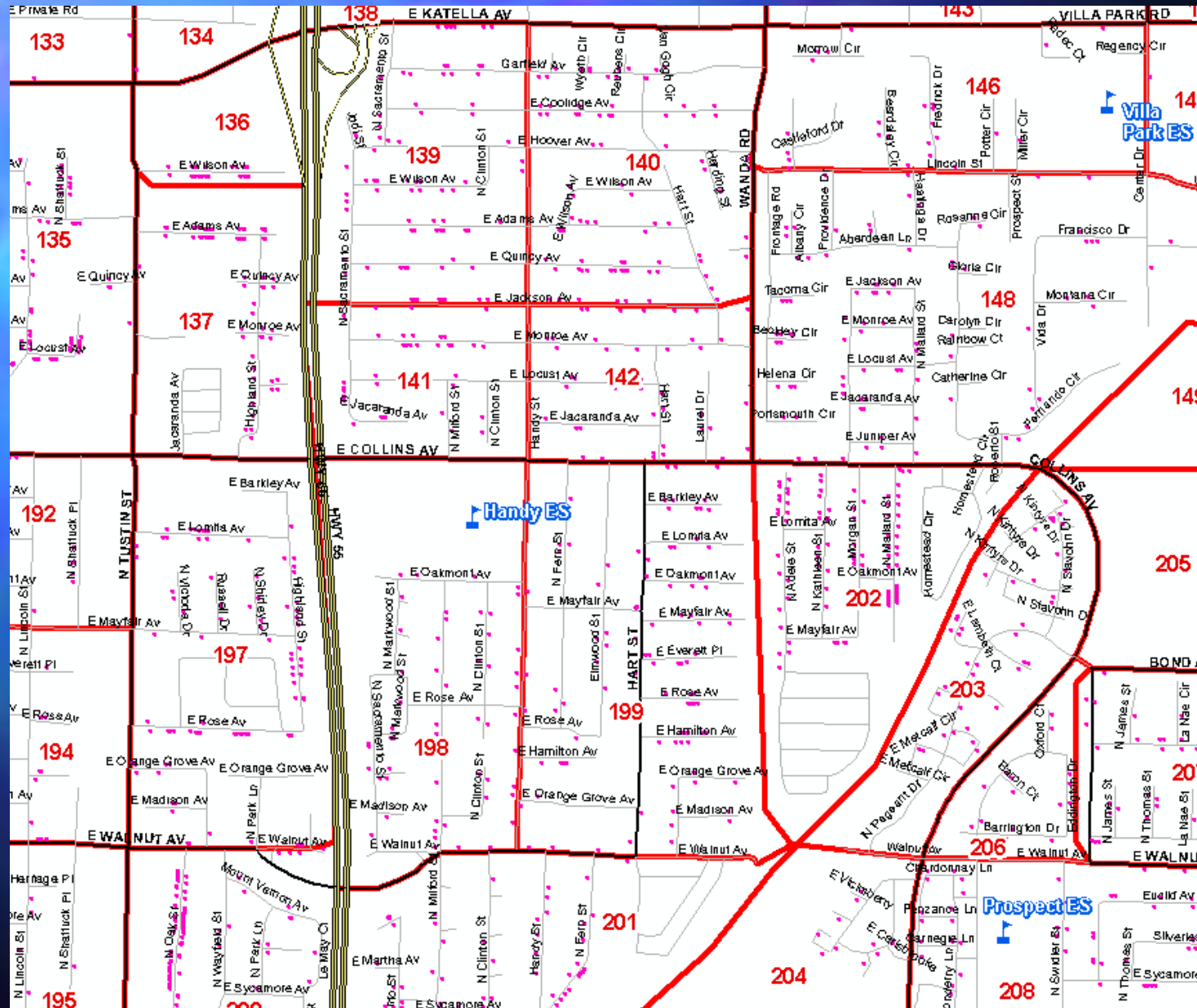
# Mapping the District's Student Data



Dots are placed  
where students reside

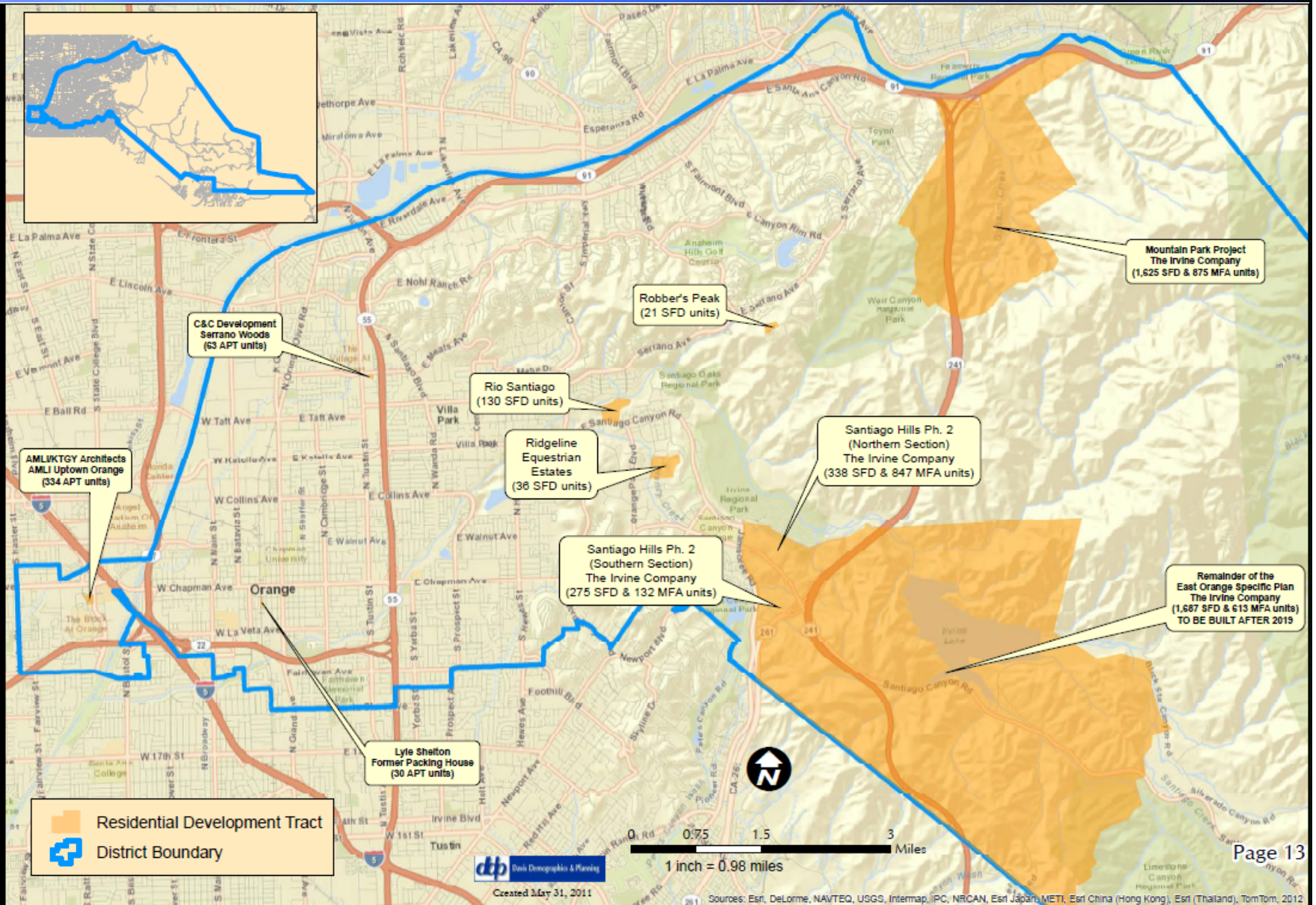
DDP used mapped (“geocoded”) student data for the  
Orange Unified School District from 2009-2012

# Study Areas (A total of 316)



# Residential Development

Future Residential Developments in the Orange Unified School District Over the Next Seven Years



# Seven Year Projection Methodology

Projections were prepared for each of the 316 Study Areas

- Graduate 12th grade; move up other grades
- Estimate incoming K from past birth data by zip codes:

**Birth Factors - by Zip Code**  
*These Factors Take into Account the District's Transitional Kindergarten Plan*

School Yr	2013/14	2014/15	2015/16	2016/17	2017/18	2018/19	2019/20
Zip Code	Year 1	Year 2	Year 3	Year 4	Year 5	Year 6	Year 7
92807	0.966	1.056	1.032	1.014	1.033	1.040	0.984
92808	1.034	1.060	1.072	1.055	1.067	1.074	1.074
92865	1.170	1.180	1.289	1.324	1.280	1.266	1.266
92866	0.837	1.035	1.074	1.016	1.018	1.025	1.025
92867	1.027	1.046	0.965	0.927	0.985	1.007	1.007
92868	0.961	1.097	1.099	1.146	1.120	1.106	1.106
92869	1.057	1.146	1.039	1.071	1.100	1.103	1.103

- Add enrollment generated by new construction

<u>SYF's</u>	<u>K-6</u>	<u>7-8</u>	<u>9-12</u>	<u>K-12</u>
SFD	.325	.063	.123	.512
MFA	.153	.026	.044	.223
APT	.058	.007	.016	.081

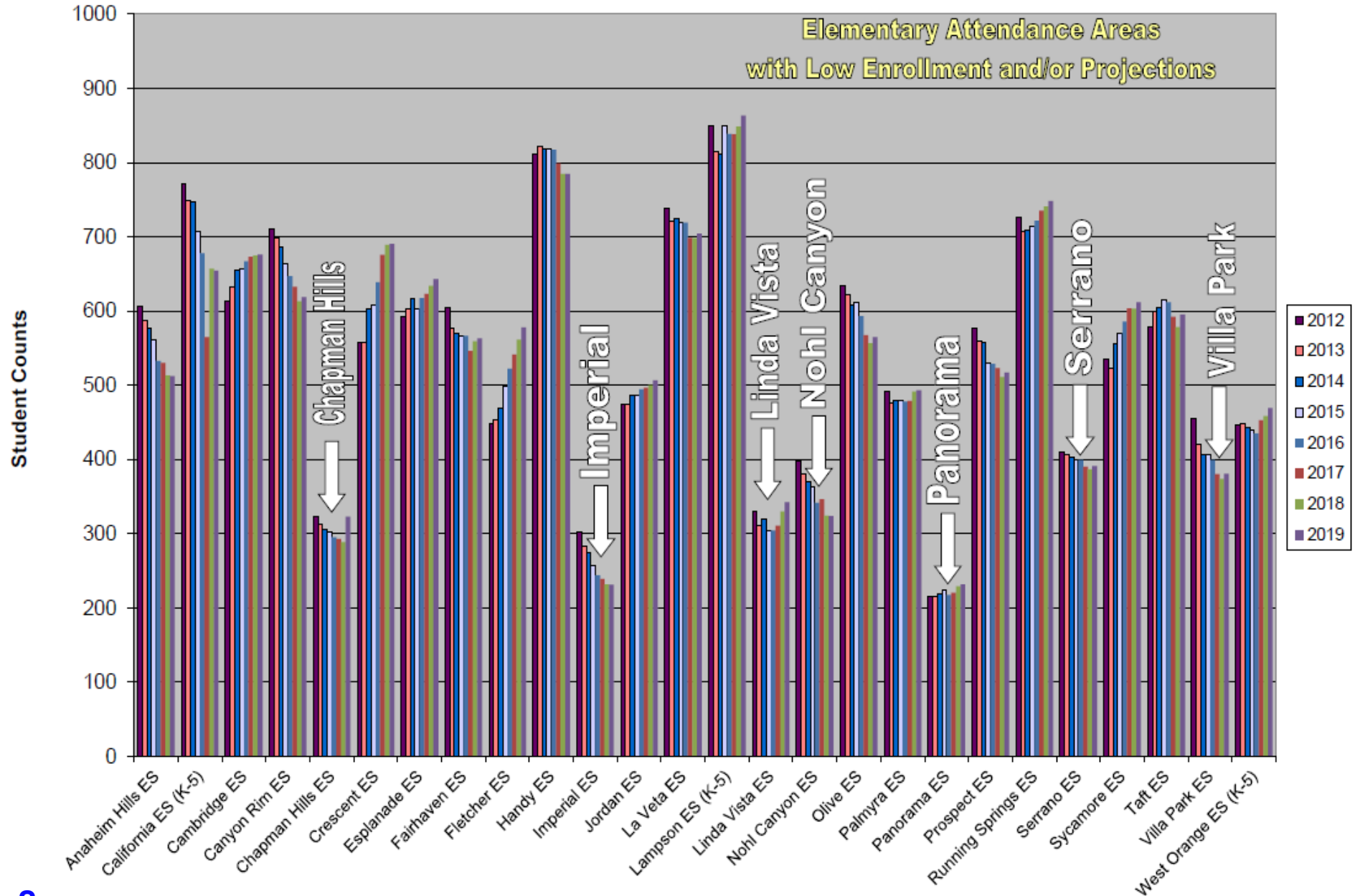
	Oct. '12-'13	Oct. '13-'14	Oct. '14-'15	Oct. '15-'16	Oct. '16-'17	Oct. '17-'18	Oct. '18-'19
<b>Projected Housing</b>	<b>63</b>	<b>3</b>	<b>340</b>	<b>21</b>	<b>51</b>	<b>230</b>	<b>636</b>

- Modify enrollment based upon mobility/cohort factor from analysis of historical enrollment changes from grade to grade using a sample of study areas in each elementary school attendance area.

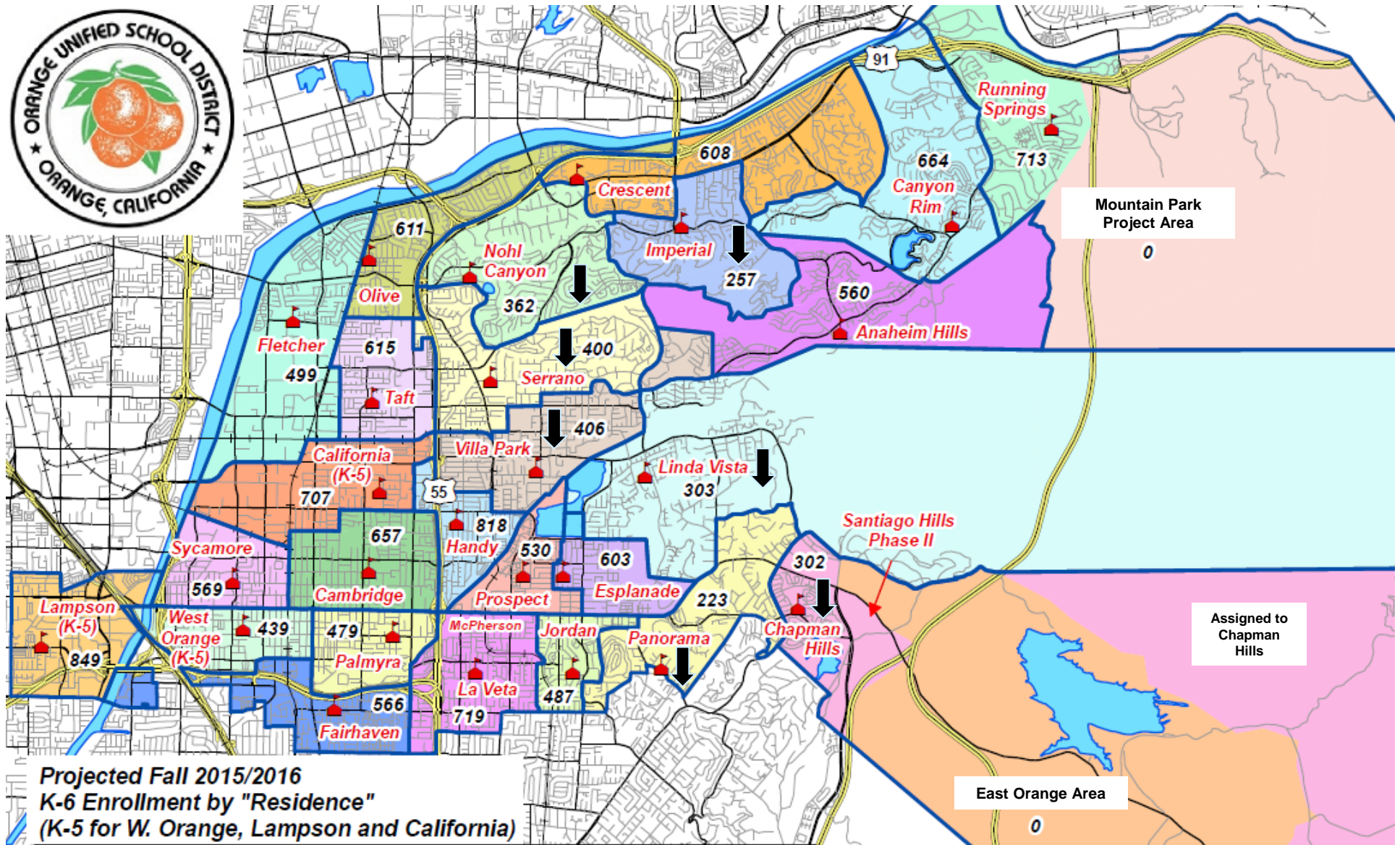




**Orange USD**  
**Elementary Attendance Area Projections**  
*(Residence Based)*

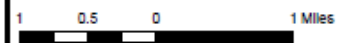






**Elementary Attendance Areas**

- |            |               |             |             |                    |                    |
|------------|---------------|-------------|-------------|--------------------|--------------------|
| California | Jordan        | Palmyra     | Sycamore    | Anaheim Hills      | Elementary Schools |
| Cambridge  | Chapman Hills | Panorama    | Taft        | Canyon Rim         | Railroads          |
| Crescent   | Lampson       | Prospect    | La Veta     | Running Springs    | Streets            |
| Esplanade  | La Veta       | Nohl Canyon | Villa Park  | East Orange Area   | Water              |
| Fairhaven  | Linda Vista   | Olive       | West Orange | Mountain Park Area |                    |
| Fletcher   | Handy         | Serrano     | Imperial    |                    |                    |



1 inch = 1.38 miles



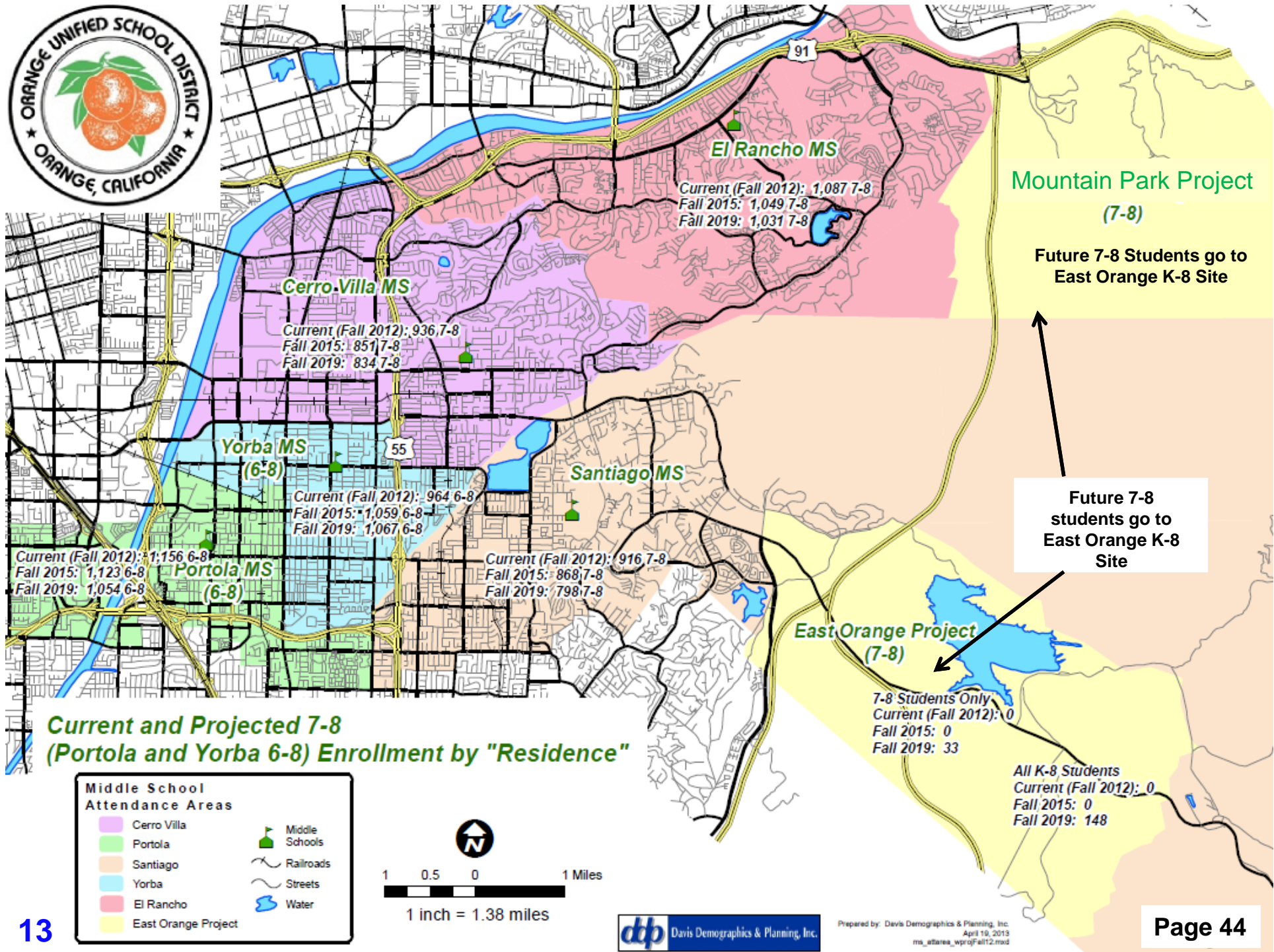
10



# CONCLUSIONS

## AT THE ELEMENTARY LEVEL

- Projections indicate an overall increase of only 145 TK-6 students over the next seven years (almost 1% growth, but mostly due to Transitional Kindergarten increases).
- Any increases in the enrollment is dependent upon progress of large proposed projects by The Irvine Company.
- Current trends show that many elementary attendance areas in the District are expected to have their students populations continue to decline over the next seven years (in built-out areas).
- District may need to consider boundary adjustments and/or consolidating some of its smaller elementary schools (8 ES below 500 enrollment, 2 of them below 400, 2 around 850).



# CONCLUSIONS AT THE MIDDLE SCHOOL LEVEL

- As of Fall 2012, the District's five main MS's had enrollment ranging from 667 to 1,197 students (4,665 total enrollment plus 212 7-8 students at McPherson).
- Projections indicate net declines over the next two years at the MS level losing almost 190 7-8 students by Fall 2014.
- Overall, from Fall 2012-2019, the 7-8 student population could decline by 250 students (a 5.4% loss).
- There is not enough of a decline at the middle school level to need to make any changes at this time (however the number of students within the current Cerro Villa and Santiago's attendance areas could become considerably smaller).



# Attendance Matrix (High Schools)

Orange Unified School District

SY 2012/2013 Report

## Fall 2012/2013 9-12 (High School) Attendance Matrix

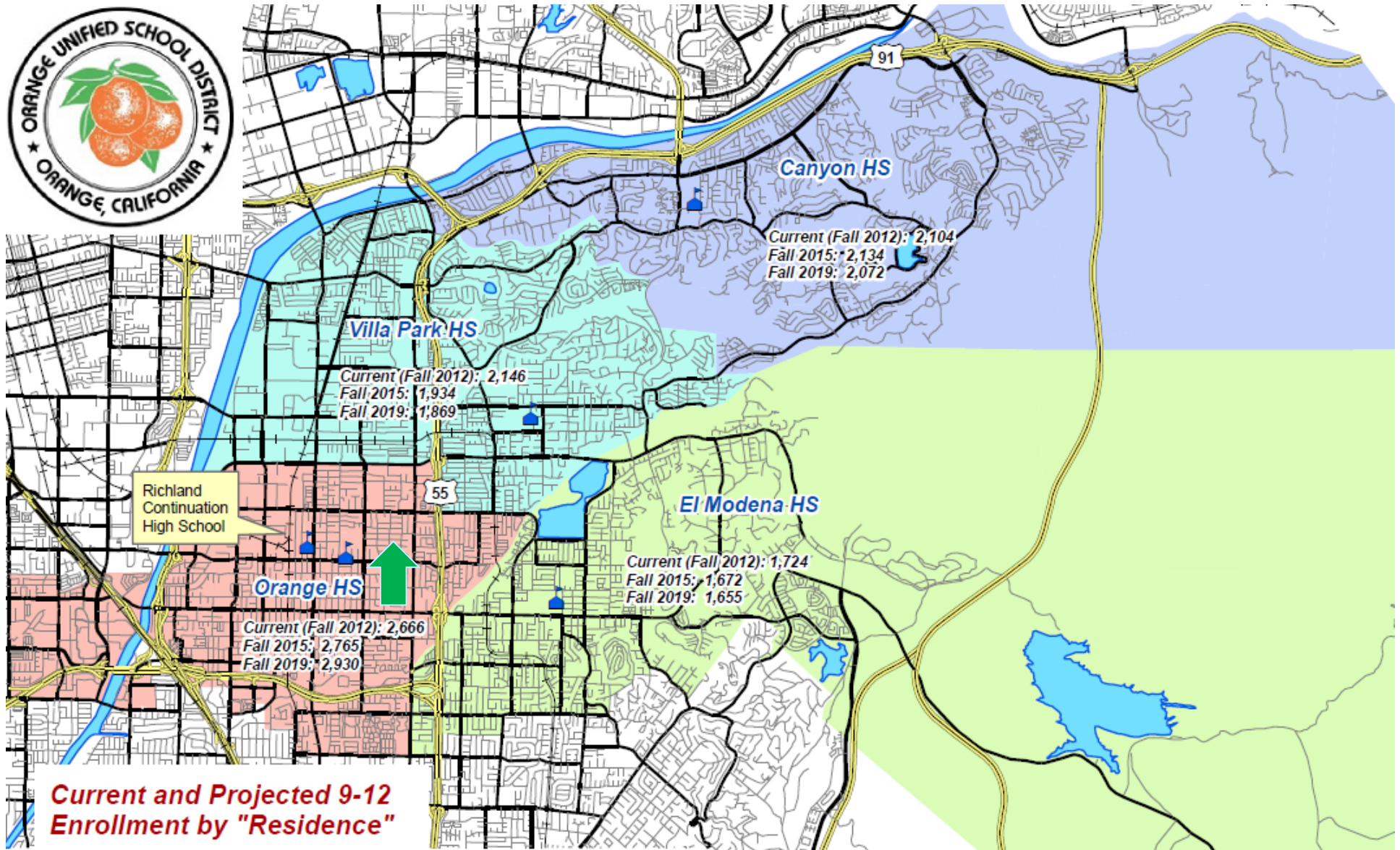
SCHOOL OF RESIDENCE CURRENT ATTENDANCE AREA	Attendance Area	SCHOOL OF ATTENDANCE									"Transfer Out" Rates	
		9-12 Students	Canyon (390)	(9-12 only) Canyon Hills* (396)	El Modena (391)	Orange (392)	(11-12 only) Richland* (393)	Villa Park (394)	(9-12 only) Non Public School (3)	Community Day School (395)		OUSD Home School (397)
	Canyon High School	2,104	2,022	0	11	2	19	50	0	0	0	3.9%
	El Modena High School	1,724	65	0	1,448	21	83	98	0	9	0	16.0%
	Orange High School	2,666	40	0	431	1,651	182	346	0	16	0	38.1%
	Villa Park High School	2,146	113	0	43	66	56	1,863	0	5	0	13.2%
	<b>9-12 Sub Totals:</b>	<b>8,640</b>	<b>2,240</b>	<b>0</b>	<b>1,933</b>	<b>1,740</b>	<b>340</b>	<b>2,357</b>	<b>0</b>	<b>30</b>	<b>0</b>	
	Special Education/SDC Students:	318	37	22	87	96	13	63	0	0	0	
	Non Public Schools:	17	0	0	0	0	0	0	17	0	0	
	OUSD Home School:	73	0	0	0	0	0	0	0	0	73	
	Unmatched**	4	0	0	2	0	0	1	0	1	0	
	Out of District:	325	84	0	71	80	4	77	0	0	9	
	<b>9-12 Totals:</b>	<b>9,377</b>	<b>2,361</b>	<b>22</b>	<b>2,093</b>	<b>1,916</b>	<b>357</b>	<b>2,498</b>	<b>17</b>	<b>31</b>	<b>82</b>	
	# Enrolled, But Not Living in Attendance Area:	1598	302	--	556	169	--	571	--	--	--	
	Open Enrollment % ("Transfers In"):	18.5%	13.5%	N/A	28.8%	9.7%	N/A	24.2%	N/A	N/A	N/A	
	District-wide											

The above data is based upon a database download provided to DDP by the OUSD representing enrollment around the Fall 2012 CBEDS date (early-October 2012).

\* Canyon Hills and Richland Schools have no set attendance areas and ,therefore, pull students throughout the District boundary.

\*\* "Unmatched" represents incomplete student address information and therefore could not be mapped.

The upper matrix and the projections do not include 162 students with grades 14 or 15 (Adult Education).



# CONCLUSIONS AT THE HIGH SCHOOL LEVEL

- As of Fall 2012, all four of the District's comprehensive high schools had enrollment over 1,900 students (9,377 overall 9-12 students).
- For Fall 2013, the 9-12 enrollment may decline by 159 students (9,128), level off then pick up again later (2019) when larger development may begin again.
- There is concern for Orange HS; largest resident population, huge "transfers out" and only HS area expected to grow.
- Could require boundary adjustments at the HS level.

The image features a vibrant, abstract background of a nebula or galaxy, with swirling patterns of blue, purple, and cyan. The colors are most intense in the upper left and center, fading into a dark blue/black at the bottom right. Centered in the image is the word "QUESTIONS?" in a bold, yellow, sans-serif font.

QUESTIONS?